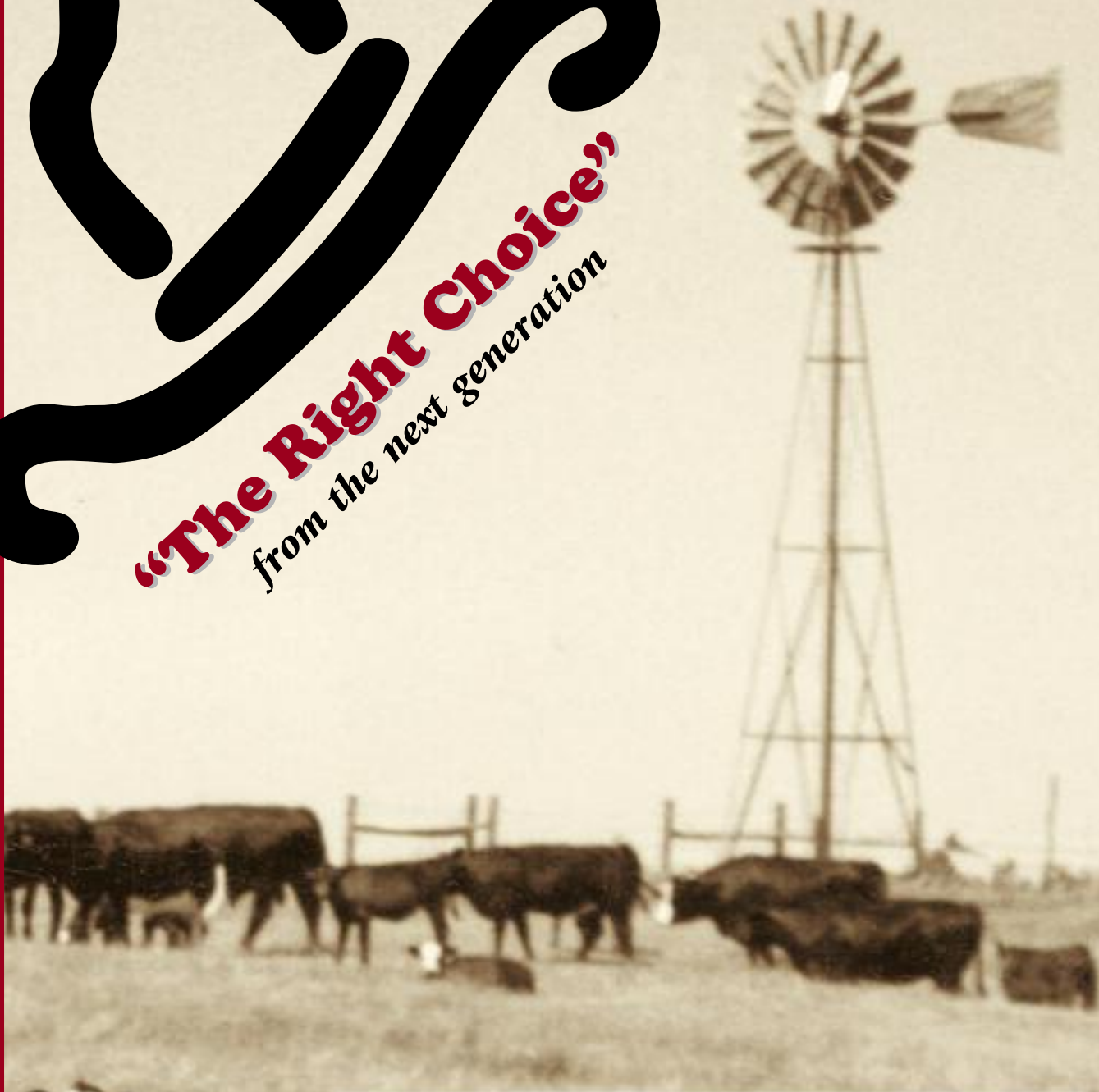


**“The Right Choice,”**  
from the next generation



*42nd Annual*  
**Forster Farms**  
**Simmental Production Sale**  
**Saturday, January 30, 2021 - 1:00 p.m.**  
at the farm - Smithfield, Nebraska

# FORSTER FARMS

Welcome fellow cattlemen and cattewomen to our 42nd annual Simmental Production Sale. We would like to invite you to be our guest and analyze our offering. Whether your operation needs a calving ease high maternal sire or a high growth more terminal carcass sire, you will find and strong selection of exceptional quality potential herd sires that will fill your needs. This year's offering has all percentages from purebred to ¼ bloods in both black and red. Many are sired by some of the most popular sires in the Simmental, Angus and Red Angus breeds.



Alan, Verlouis, Craig and Kevin Forster



Lynn Forster and cousin Kiley



Katie Forster Rhodig, son Tucker and husband Jon



Korey Forster



Dillon Tiede and Kristen Kohmetscher DVM



Dani Forster



Leif Forster Family

All bulls selling are guaranteed against injury, not death, for the first 60 days from turn out. Death coverage can be added onto your farm policy very economically. We will pro-rate your next purchase based on the how long you were able to use him, then subtract any salvage value you received from the injured bull. If you ever have any questions, concerns, or just want to talk cattle, please give us a call. All cattle sell under ASA's suggested terms and conditions.

We will have a supplement sheet on our web site as soon as they are available at [www.ForsterFarms.com](http://www.ForsterFarms.com). It will include carcass ultrasound results along with updated weights and carcass EPDs. Remember that EPDs are the most accurate predictor of both performance and carcass traits. If you have any questions about EPDs or cross breeding that would work best for your operation I would be glad to help.

As always, the sale offering is available for your inspection at any time, please call ahead to make sure someone can go through them with you. I encourage you to stop by and analyze our offering, we think that you will be impressed with the selection and overall quality. Our cow herd and herd sires are also available for your inspection in their natural un-pampered environment. If you have any questions or would like help with making your selections please give us a call or stop by the office.

The sale will be broadcast live on DVAuction.com for those that can't attend the sale. We thank you for your interest in our program and look forward to seeing you sale day!

## Alan Forster The Forster Family

### Breed EPD Averages

CE	BW	WW	YW	MCE	MM	MWW	CW	REA	\$API	\$TI
<b>Simmental Averages</b>										
10.6	1.8	75.9	112.8	5.7	23.2	61.3	29.1	0.86	126.29	75.79
<b>SimAngus™ Averages</b>										
12.1	0.6	73.8	113.7	6.7	22.4	59.1	32.2	0.63	126.89	76.34



42nd Annual  
**Forster Farms**  
**"Simmental Production Sale"**

**Saturday, January 30, 2021 - 1:00 p.m.**  
**at the farm - Smithfield, Nebraska**

*(one mile east of Smithfield on Hwy. 23, then 1/2 mile north)*

**125 Exceptional Lots**

**An outstanding, stout set of performance-bred purebred and percentage bulls.**  
**35 Bred Heifers • 20 Open Heifers • 70 Yearling Bulls**

Over 80% are Black, and the balance are Solid Red or Red Baldy . . . hard to match this high-performing set of Forster-Bred Stock!!

<b>Herd Health Program:</b>	<b>3-4 Weeks Post Weaning</b>	*All announcements from the block take precedence over all written material. *All bulls have Adjusted Birth Weights. *ASA approved Sale Terms and Conditions will be used.
	<b>Bred Heifers</b>	
<b>All</b>	Bova Shield Gold 5	<b>Dam's Age</b> To determine Dam's age. Look at the letter in her Tattoo. For example: C - Born in '15 B - Born in '14 A - Born in '13 Z - Born in '12 Y - Born in '11
<b>Birth</b>	Pfizer Somubac	
<b>Alpha 7</b>	All Heifers are Bangs Vaccinated	* All animals in sale have been BVD tested negative.
<b>Branding</b>	<b>Bred Heifers</b>	
<b>Vira-Shield 6 with pink-eye</b>	Pre-Breeding	
<b>Vision 7 with Somnus</b>	PregGuard 9	
<b>Weaning</b>	<b>Preg Check</b>	
<b>Vista Once</b>	Scour Guard 3Kc	
<b>Bova Shield Gold 5</b>	Autogenous Colostridum	
<b>Ivermectin</b>	<b>Off Grass</b>	
	Ivermectin	

**Bull Buyers**

*This year every bull selling is eligible for FREE board, FREE semen check and FREE delivery to Nebraska and Kansas on or around March 1st. Forster Farms will assist in making arrangements for delivery in any other state in the continental U.S. If the buyer wishes to take delivery later than March 1st, he shall be charged \$3.00 per day per head until he picks up his bulls.*

**- All animals sell under the terms and conditions of the American Simmental Association -**

**Forster Farms Right to Collect . . .** Forster Farms reserves the right to collect semen, at their expense, on any bull selling for within herd use only. We are retaining 1/3 semen interest in every bull selling.

**How the bulls are fed . . .** This year the bulls were started on a weaning ration then moved to Purina Impact Backgrounder that does not require hay. We fed them grass hay free choice for several weeks to move them up slower. The final weeks before the sale, after yearling data they will be transitioned to a TMR of Ground hay, silage and Wet Distillers grain.

**Every bull sells with . . .** a first breeding season guarantee against injury, not death for the first 60 days from turn out. We will prorate your credit minus salvage value for credit only on your next purchase.

**Livestock Press Representatives:**

<i>the Register</i>	Nathan Smith	620-546-4839
<i>Midwest Messengerr</i>	Chris Butler	402-380-8244
<i>Livestock Plus</i>	Randy Rasby	308-539-6195

**Motel Accommodations:**

Super 8 - Lexington, NE	308-324-7434
Comfort Inn - Lexington, NE	308-324-3747
Super 8 - Holdrege, NE	308-995-2793

**Auctioneer:**

**Tracy Harl**  
 19500 56th Road  
 Kearney, NE 68845  
 402-469-3852

Created by:  
**ASA PUBLICATION, INC**  
 One Genetics Way, Bozeman, MT 59718  
 Phone: 406-587-2778  
 www.simmental.org

**Join Us For A Great Complimentary Sale Day Lunch**  
**Sale Day Phone: 308-472-5036**

**Forster Farms**

74096 RD 434, Smithfield, Nebraska 68976  
 Office: 308-472-5036 • Alan: 308-991-2208  
 Verlouis: 308-472-3086 • Craig: 308-325-4861 • Kevin: 308-325-2093  
 email: alan\_forster@hotmail.com



# REFERENCE SIRES

ASA Number	Name	Color - HPS - Breeds	CE	BW	WW	YW	MCE	MM	MWW	CW	MB	REA	API	TI
2624126	ACW IRONHIDE 395Y	Homo Black - Homo Polled - 1/2 SM 1/2 AN	13.7	-2.3	67.9	107.6	4.7	23	56.9	43.1	0.16	0.84	126.4	73.5
2956438	APEX COWBOY CUT SW172B	Homo Black - Homo Polled - 1/2 SM 1/2 AN	17.3	-2.4	55.5	85.2	11.8	29.8	57.6	20.6	0.5	0.34	144.5	74.5
2795725	ASR IMPRESSIVE Y162	Red - Homo Polled - PB AR	20.3	-8.2	43.1	70.9	11.7	19.7	41.2	0.6	0.28	0.31	126.8	70.5
2674433	BROWN JY REDEMPTION Y1334	Red - Homo Polled - PB AR	14.9	-4.9	63.7	113.8	7.4	25.2	57	24.2	0.64	0.03	145	87.7
3026655	CCR ABILENE 6018C	Homo Black - Homo Polled - 3/4 SM 1/4 AN	9.6	3.4	90.5	142.8	8.5	11.4	56.6	36.5	0.82	0.96	161	95.3
2880390	CCR BOULDER 1339A	Homo Black - Homo Polled - 1/2 SM 1/2 AN	15.4	-2.5	70.4	110.7	9.3	23.8	59	18.8	0.66	0.87	162.5	88.9
2703910	CCR COWBOY CUT 5048Z	Homo Black - Homo Polled - PB SM	12.2	2.6	98.1	139	7.6	26.4	75.4	41.9	0.42	1.07	160.2	95.9
3112013	CCR PAY DIRT 2340C	Homo Black - Homo Polled - 1/2 SM 1/2 AN	8.7	1.5	92.7	147.2	5.7	26.3	72.6	46.8	0.67	0.42	141.8	95
3111909	CCR PAYDAY 0320C	Homo Black - Homo Polled - 1/2 SM 1/2 AN	10.1	2.5	90.9	134.1	5.5	19.6	65	58.4	0.33	0.36	126.8	82.4
3287123	CDI PERCEPTION 254E	Red - Homo Polled - PB SM	12.3	-1.8	78.2	118.4	6.9	23.9	63	25.4	0.2	0.61	150.1	83.4
3547314	EZAR GOLD RUSH 6001	Black - Homo Polled - PB AN	12	-0.1	101.8	173.3	7	14.6	65.4	75.2	0.91	0.56	152.6	99.9
3044472	FELT GOT GAME	Hetero Black - Homo Polled - PB SM	10.4	2	75.8	115	3.1	25.1	63	34.9	0.02	0.92	113.5	73.7
2789030	FELT PURPLE STEPS UP	Homo Black - Polled - PB SM	11.8	2	76.8	112.2	3.2	17.1	55.4	21.1	0.14	1.14	125.8	77.3
2665675	FF BEEF Z782	Homo Black - Polled - 1/2 SM 1/2 AN	15.7	-3.6	48.9	86.2	8	29.3	53.7	16.1	0.34	0.41	130.4	68.9
3338867	FF COWBOY CUT E1316	Black - Polled - 3/4 SM 1/4 AN	12	1.9	96.3	145.8	7	24.7	72.9	41.4	0.41	0.66	149.8	91
3196722	FF GRADUATE D714	Homo Black - Hetero Polled - 5/8 SM 3/8 AN	16.2	-3.1	53.4	81.5	9.6	25.7	52.4	14.4	0.16	0.68	128.9	66.2
3505048	FF JACK F1241	Hetero Black - Polled - 1/2 SM 1/2 AR	9.1	1.3	77.8	101.8	6.6	24.5	63.4	18.6	0.15	0.33	115.1	72.4
2917825	FF JACKHAMMER B412	Red - Polled - 1/2 SM 1/2 AR	10.1	0.5	82.8	98.7	7.1	18.6	59.9	6.7	0.22	0.39	117.8	77.2
3008069	FF PAY DAY C815	Homo Black - Polled - 1/2 SM 1/2 AN	12.3	-0.7	56.3	80.1	7.1	24.3	52.5	10.6	0.19	0.54	126	64.2
2968152	GIBBS 4091B THE ROCK	Homo Black - Homo Polled - 5/8 SM 3/8 AN	16.2	-2.9	70.1	118.3	9.3	16.6	51.6	44.1	0.17	0.99	140.1	76.3
3403352	HOOK'S FRONTLINE 40F	Homo Black - Homo Polled - PB SM	13.6	-0.9	77.8	118.8	6.7	26.2	65.1	28.4	0.37	1	157	87.9
2628568	J BAR J NIGHTRIDE 225Z	Homo Black - Homo Polled - 5/8 SM 3/8 AN	17	-3.8	67.9	112.1	7	10.8	44.8	37	0.8	0.74	159.9	90.4
2815633	K C F BENNETT ABSOLUTE	Homo Black - Homo Polled - PB AN	16.7	-2.5	80.1	136.9	6.9	15.2	55.2	54.8	0.66	0.46	142	83.5
3661105	KEY - JIF 740E	Black - Polled - PB AN	6.2	2.6	88.4	153.5	-1.6	28.8	73	61.7	0.75	0.29	120.6	84.2
2760758	LEACHMAN CADILLAC L025A	Red - Homo Polled - 3/8 SM 3/8 AR 1/8 AN 1/8 CS14	-1.8	76.5	124.1	4.8	26.9	65.1	31.5	0.26	0.55	114.9	78.4	
3219932	MILL BAR HICKOK 7242	Black - Homo Polled - PB AN	18.8	-2.3	84.6	133.6	7.7	19.4	61.6	53.6	0.59	0.6	175.6	104.3
2749844	OVAL F ALL TIME A322	Homo Black - Homo Polled - PB SM	11.5	1.1	80.6	118.4	8.2	37.6	77.9	41.7	0.19	0.93	137.2	83
2930104	RFS BULLETPROOF B42	Red - Homo Polled - PB SM	8.9	2.6	97.9	157.4	7.5	34.9	83.8	56.1	0.1	1.13	142.9	89.3
2891336	TJ MAIN EVENT 503B	Homo Black - Homo Polled - 1/2 SM 1/2 AN	12.6	0.2	94.1	142.6	4.7	30.7	77.7	51.8	0.17	1.02	131.4	87.5
3459734	TJ TEARDROP 783F	Homo Black - Homo Polled - 3/4 SM 1/4 AN	18.5	-2.1	88.8	135.5	7.9	38.2	82.5	48.8	0.07	0.89	149	85.8
3527713	TTG COWBOY CUT B750	Black - Homo Polled - 3/4 SM 1/4 AN	15	0.1	75.5	114.3	8.1	27.6	65.3	36	0.23	0.75	135.2	77
2614725	W/C UNITED 956Y	Homo Black - Homo Polled - 1/2 SM 1/2 AN	11.1	1.2	99.5	163.2	7.2	18.8	68.5	58.7	0.14	0.76	111.9	86.6
2885552	WINC LIVE AMMO 420B	Hetero Black - Homo Polled - PB SM	10.3	1.1	76	121.1	9	12.9	50.9	35.3	-0.27	1.13	105.1	67.4



Alan Forster Family



Kevin Forster family



Craig Forster Family  
Ann, Craig, Nigel, Emerald, Leif



Verlous & Darlene

# YEARLING BULLS

This is a very special offering of bulls this year. This group is fantastic in their disposition, stoutness, performance and style. Homo black test results will be on the supplement sheet. You will not be disappointed in this selection!



## FF BULLET PROOF H762

ASA# 3728103 • BD: 3/5/20  
 Adj. BW: 81 lbs. • Adj. 205: 706 lbs.  
 Red • Polled • 3/4 Simmental • Bull  
 GW REDESTINED 642X  
 RFS MISS Z119  
 BFCK CHEROKEE CNYN 4912  
 R402

RFS BULLETPROOF B42

FF MS C CANYON T382

EPDs:	CE 8.7	BW 2.7	WW 85.5	YW 135.7	MCE 4.1	MM 27.2	MW 69.9
	CW 39.5	MARB .21	REA .94	API 130	TI 79		



H762



## FF COWBOY 1316 H856

ASA# 3728095 • BD: 3/4/20  
 Adj. BW: 87 lbs. • Adj. 205: 816 lbs.  
 Black • Polled • 5/8 Simmental • Bull  
 CCR COWBOY CUT 5048Z  
 FF MS RIGHT ANSWER A1116  
 T J PAYOFF S66  
 N356

FF COWBOY CUT E1316

FF MS PAYOFF U396

EPDs:	CE 8.7	BW 3.8	WW 99.2	YW 149.1	MCE 5.3	MM 24.3	MW 73.8
	CW 48.4	MARB .24	REA .71	API 136	TI 86		



H856



## FF CB AX H885

ASA# 3728132 • BD: 3/17/20  
 Adj. BW: 67 lbs. • Adj. 205: 711 lbs.  
 Black • Polled • 1/2 Simmental • Bull  
 CCR COWBOY CUT 5048Z  
 AP RACHEL S172W  
 S A V NET WORTH 4200  
 FF MS FULL FIGURE L555

APEX COWBOY CUT SW172B

FF MS NET WORTH U555

EPDs:	CE 15.4	BW -1.4	WW 60.4	YW 89.3	MCE 9.7	MM 31.3	MW 61.4
	CW 25.1	MARB .43	REA .45	API 141	TI 74		



CCR COWBOY CUT 5048Z - GRANDSIRE OF H885



## FF LIVE AMMO H976

ASA# 3727996 • BD: 2/12/20  
 Adj. BW: 84 lbs. • Adj. 205: 715 lbs.  
 Black • Polled • Purebred • Bull  
 REMINGTON LOCK N LOAD54U  
 RCFS SWEET TREAT  
 CNS DREAM ON L186  
 FF MS JOKER P526

WINC LIVE AMMO 420B

FF MS DREAM-ON W526

EPDs:	CE 10.9	BW 1.5	WW 75.2	YW 112.5	MCE 7.7	MM 18.2	MW 55.8
	CW 27.1	MARB -.17	REA 1.06	API 112	TI 69		



H976

# YEARLING BULLS



## FF COWBOY CUT H1001

ASA# 3728027 • BD: 2/18/20  
Adj. BW: 87 lbs. • Adj. 205: 749 lbs.  
Black • Polled • 3/4 Simmental • Bull

CCR COWBOY CUT 5048Z

TRIPLE C SINGLETARY S3H  
CCR MS 4045 TIME 7322T

FF MS PAYOFF X008

T J PAYOFF S66

FF MS FIG THIS S005

EPDs:	CE 8.9	BW 3.8	WW 94.1	YW 135.6	MCE 4.9	MM 26.9	MW 73.9
	CW 45.8	MARB .35	REA .79	API 141	TI 85		



## FF PAYDAY 815 H1017

ASA# 3728125 • BD: 3/15/20  
Adj. BW: 87 lbs. • Adj. 205: 777 lbs.  
Black • Polled • 1/2 Simmental • Bull

FF PAY DAY C815

FF PAY DAY Y110

FF MS HOF U086

FF MS PAYOFF X057

T J PAYOFF S66

FF MS KOREY K100

EPDs:	CE 8.3	BW 2.3	WW 78.2	YW 109.3	MCE 4.7	MM 24.8	MW 63.8
	CW 30.3	MARB .17	REA .54	API 124	TI 72		



## FF PAYDAY H1048

ASA# 3728143 • BD: 3/21/20  
Adj. BW: 73 lbs. • Adj. 205: 682 lbs.  
Black • Polled • 3/4 Simmental • Bull

FF PAY DAY C815

FF PAY DAY Y110

FF MS HOF U086

WRC MRS DREAM ON X052

CNS DREAM ON L186

WRC MISS JOKER R552

EPDs:	CE 11.9	BW 0.9	WW 64.4	YW 89.8	MCE 7.6	MM 28.8	MW 61
	CW 12	MARB .07	REA .75	API 118	TI 65		



## FF CB AX H1050

ASA# 3728086 • BD: 3/3/20  
Adj. BW: 78 lbs. • Adj. 205: 656 lbs.  
Black • Polled • 1/2 Simmental • Bull

APEX COWBOY CUT SW172B

CCR COWBOY CUT 5048Z

AP RACHEL S172W

LHT MS MACHO 28X

3C MACHO M450 BZ

L H T MS RR 2418 51N

EPDs:	CE 13.3	BW -0.2	WW 62.1	YW 92	MCE 8.5	MM 28.9	MW 59.9
	CW 22.4	MARB .40	REA .33	API 129	TI 73		



## FF BULLET PROOF H1058

ASA# 3727981 • BD: 2/9/20  
Adj. BW: 65 lbs. • Adj. 205: 704 lbs.  
Red • Polled • 3/4 Simmental • Bull

RFS BULLETPROOF B42

GW REDESTINED 642X

RFS MISS Z119

FF MS ENCORE X405

WSJ ENCORE

N368

EPDs:	CE 11.3	BW 0	WW 78.4	YW 115.1	MCE 7.4	MM 29.4	MW 68.5
	CW 37.6	MARB .24	REA .85	API 132	TI 79		

# YEARLING BULLS



## FF GOT GAME H1070

ASA# 3728135 • BD: 4/1/20  
 Adj. BW: 75 lbs. • Adj. 205: 774 lbs.  
 Black • Polled • 3/4 Simmental • Bull  
 R&R CHAMBERLAIN X744  
 SVF SHEZA GLORY T912  
 GLS COMBINATION R2  
 FF MS PROTOTYPE SM/AN T4

FELT GOT GAME

FF MS COMBINATION X770

EPDs:	CE	BW	WW	YW	MCE	MM	MW
	11.4	1.5	76.5	116.6	5.3	30.7	68.9
	CW	MARB	REA	API	TI		
	34.7	.19	.90	119	75		



## FF STEP UP H1112

ASA# 3728156 • BD: 3/29/20  
 Adj. BW: 79 lbs. • Adj. 205: 728 lbs.  
 Black • Polled • 3/4 Simmental • Bull  
 WS A STEP UP X27  
 FELT PURPLE REIGNS 717T  
 TNT DUAL FOCUS T249  
 FF MS TOTAL W158

FELT PURPLE STEPS UP

FF MS DUAL FOCUS Y918

EPDs:	CE	BW	WW	YW	MCE	MM	MW
	11.7	1.7	78.1	116.9	5.3	22.7	61.7
	CW	MARB	REA	API	TI		
	22.8	.18	.93	123	75		



## FF IMPRESSIVE H1113

ASA# 3728158 • BD: 3/30/20  
 Adj. BW: 71 lbs. • Adj. 205: 678 lbs.  
 Red • Polled • 3/8 Simmental • Bull  
 MUSHRUSH IMPRESSIVE CA U236  
 ASR MS MAJOR LEAGUE U834  
 WS BEEF MAKER R13  
 FF MS CHATEAU T104

ASR IMPRESSIVE Y162

FF MS BEEF MAKER Y713

EPDs:	CE	BW	WW	YW	MCE	MM	MW
	15.5	-3.9	57.9	89	9.4	22.7	51.6
	CW	MARB	REA	API	TI		
	13.5	.31	.67	131	71		



## FF STEP UP H1116

ASA# 3728139 • BD: 3/20/20  
 Adj. BW: 86 lbs. • Adj. 205: 710 lbs.  
 Black • Polled • Purebred • Bull  
 WS A STEP UP X27  
 FELT PURPLE REIGNS 717T  
 FELT NEXT BIG THING 54T  
 FF MS MACHO R053

FELT PURPLE STEPS UP

FF MS BIG THING Y163

EPDs:	CE	BW	WW	YW	MCE	MM	MW
	9.5	3.3	74.5	108.8	4.2	19.5	56.7
	CW	MARB	REA	API	TI		
	20.5	.12	.82	122	73		



## FF PAYDAY 815 H1117

ASA# 3728072 • BD: 2/29/20  
 Adj. BW: 75 lbs. • Adj. 205: 652 lbs.  
 Black • Polled • 1/4 Simmental • Bull  
 FF PAY DAY Y110  
 FF MS HOF U086  
 T J PAYOFF S66  
 FF MS STETS L511 R062

FF PAY DAY C815

FF MS PAYOFF Y167

EPDs:	CE	BW	WW	YW	MCE	MM	MW
	12.3	-0.3	59.2	84.2	7.1	25	54.5
	CW	MARB	REA	API	TI		
	20.8	.17	.44	121	63		



## FF COWBOY 1316 H1210

ASA# 3728071 • BD: 2/29/20  
 Adj. BW: 75 lbs. • Adj. 205: 699 lbs.  
 Black • Polled • 1/2 Simmental • Bull  
 CCR COWBOY CUT 5048Z  
 FF MS RIGHT ANSWER A1116  
 MYTTY IN FOCUS  
 FF MS PAYOFF X075

FF COWBOY CUT E1316

FF MS INFOCUS Z1015

EPDs:	CE	BW	WW	YW	MCE	MM	MW
	13.2	-0.2	82.4	123.8	8.2	28.7	69.8
	CW	MARB	REA	API	TI		
	31.6	.45	.40	151	86		



## FF BEEF782 H1219

ASA# 3728167 • BD: 4/3/20  
 Adj. BW: 73 lbs. • Adj. 205: 704 lbs.  
 Black • Polled • 1/2 Simmental • Bull  
 TRIPLE C BEEF MAKER  
 T7107  
 TJ SHARPER IMAGE 809U  
 FF MS PREDESTINED W123

FF BEEF Z782

FF MS SHARPER IMAGE Z923

EPDs:	CE	BW	WW	YW	MCE	MM	MW
	13	-1.5	65.1	104.6	7.3	27.3	59.8
	CW	MARB	REA	API	TI		
	28.6	.41	.42	136	77		



# YEARLING BULLS



## FF COWBOY CUT H1220

ASA# 3728008 • BD: 2/15/20  
Adj. BW: 85 lbs. • Adj. 205: 669 lbs.  
Black • Polled • 3/4 Simmental • Bull

CCR COWBOY CUT 5048Z

TRIPLE C SINGLETARY S3H  
CCR MS 4045 TIME 7322T

FF MS PROTO T508 Z720

FF PROTOTYPE SM/AN T508  
FF DICE L19P T128

CE	BW	WW	YW	MCE	MM	MW
11.2	1.9	78.6	108.8	7	23.8	63.1
CW	MARB	REA	API	TI		
32.8	.32	.66	144	81		



## FF PAY DAY 815 H1242

ASA# 3728088 • BD: 3/3/20  
Adj. BW: 79 lbs. • Adj. 205: 759 lbs.  
Black • Polled • 1/2 Simmental • Bull

FF PAY DAY C815

FF PAY DAY Y110  
FF MS HOF U086

FF MS BEEF Z941

TRIPLE C BEEF MAKER  
FF MS TOTAL W281

CE	BW	WW	YW	MCE	MM	MW
10.9	0.7	75.1	116.3	6	28	65.5
CW	MARB	REA	API	TI		
34.3	.19	.72	128	74		



## FF PERCEPTION H1262

ASA# 3728005 • BD: 2/14/20  
Adj. BW: 64 lbs. • Adj. 205: 607 lbs.  
Red • Polled • 5/8 Simmental • Bull

CDI PERCEPTION 254E

CDI PERSPECTIVE 238A  
CDI MISS POWER GRID 30C

FF MS SAM Z762

SLGN SAM 613S  
FF MS C CANYON T382

CE	BW	WW	YW	MCE	MM	MW
11.4	-1	70.7	114.3	5.1	23	58.3
CW	MARB	REA	API	TI		
27	.24	.52	136	75		



## FF COWBOY 1316 H1329

ASA# 3728067 • BD: 2/28/20  
Adj. BW: 79 lbs. • Adj. 205: 815 lbs.  
Black • Polled • 5/8 Simmental • Bull

FF COWBOY CUT E1316

CCR COWBOY CUT 5048Z  
FF MS RIGHT ANSWER A1116

FF MS PARAMOUNT B129

GW PARAMOUNT 718Y  
FF MS PARADIGM S089

CE	BW	WW	YW	MCE	MM	MW
12	1.3	90.9	137	6.4	27.1	72.5
CW	MARB	REA	API	TI		
39.9	.30	.55	143	86		



## FF COWBOY H1380

ASA# 3728070 • BD: 2/29/20  
Adj. BW: 78 lbs. • Adj. 205: 806 lbs.  
Black • Polled • 1/2 Simmental • Bull

TTG COWBOY CUT B750

CCR COWBOY CUT 5048Z  
FF MS DURAMAX W750

FF MS BRILLIANCE A1180

S A V BRILLIANCE 8077  
FF MS SULLIVAN Y884

CE	BW	WW	YW	MCE	MM	MW
12.6	1	85.2	131.4	7.1	26.2	68.8
CW	MARB	REA	API	TI		
47.8	.31	.61	134	83		



# YEARLING BULLS



## FF COWBOY CUT H1410A

ASA# 3727971 • BD: 2/7/20

Adj. BW: 63 lbs. • Adj. 205: 678 lbs.

Homo Black • Polled • 3/4 Simmental • Bull

CCR COWBOY CUT 5048Z

TRIPLE C SINGLETARY S3H

CCR MS 4045 TIME 7322T

FF MS DURAMAX B1210

TJ DURAMAX 100K

FF MS INFOCUS Z1015

EPDs:	CE	BW	WW	YW	MCE	MM	MW
	13.4	0.8	83.7	122	8.8	30.1	71.9
	CW	MARB	REA	API	TI		
	32.3	.33	.73	156	88		



## FF COWBOY CUT H1410B

ASA# 3727972 • BD: 2/7/20

Adj. BW: 61 lbs. • Adj. 205: 700 lbs.

Homo Black • Polled • 3/4 Simmental • Bull

CCR COWBOY CUT 5048Z

TRIPLE C SINGLETARY S3H

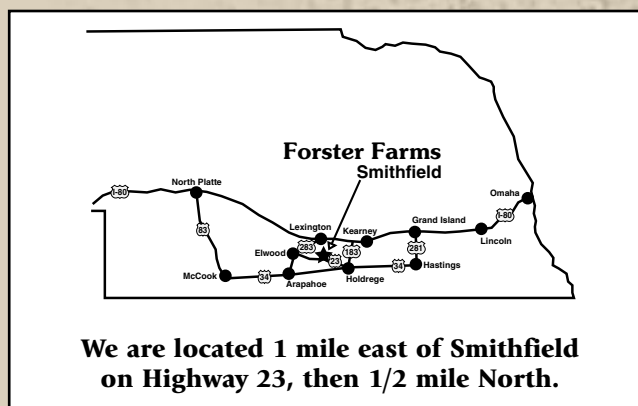
CCR MS 4045 TIME 7322T

FF MS DURAMAX B1210

TJ DURAMAX 100K

FF MS INFOCUS Z1015

EPDs:	CE	BW	WW	YW	MCE	MM	MW
	13.4	0.8	83.7	122	8.8	30.1	71.9
	CW	MARB	REA	API	TI		
	32.3	.33	.73	156	88		



We are located 1 mile east of Smithfield on Highway 23, then 1/2 mile North.

[WWW.FORSTERFARMS.COM](http://WWW.FORSTERFARMS.COM)



## FF PAYDAY 815 H1422

ASA# 3728098 • BD: 3/4/20

Adj. BW: 73 lbs. • Adj. 205: 693 lbs.

Homo Black • Polled • 1/2 Simmental • Bull

FF PAY DAY C815

FF PAY DAY Y110

FF MS HOF U086

FF MS PARAMOUNT B1222

GW PARAMOUNT 718Y

FF MS SHARPER IMAGE Z922

EPDs:	CE	BW	WW	YW	MCE	MM	MW
	12	0.1	69.9	104.3	7	24.1	59
	CW	MARB	REA	API	TI		
	24.4	.22	.51	130	72		



## FF BEEF 782 H1424

ASA# 3814580 • BD: 3/24/20

Adj. BW: 75 lbs. • Adj. 205: 655 lbs.

Black • Polled • 3/8 Simmental • Bull

FF BEEF Z782

TRIPLE C BEEF MAKER

T7107

FF MS FINAL PROD B1114

CONNELLY FINAL PRODUCT

FF MS SULLIVAN Y048

EPDs:	CE	BW	WW	YW	MCE	MM	MW
	12.2	-1.4	64.6	109.7	7.1	24.1	56.3
	CW	MARB	REA	API	TI		
	33	.39	.36	129	74		



# YEARLING BULLS



## FF NIGHT RIDE H1426

ASA# 3727983 • BD: 2/9/20

Adj. BW: 83 lbs. • Adj. 205: 737 lbs.

Black • Polled • 5/8 Simmental • Bull

GW PREMIUM BEEF 021TS

J BAR J MISS ND 793X

FF RELIANCE X092

FF MS PARADIGM SM/AN 2 R

J BAR J NIGHTRIDE 225Z

FF MS RELIANCE B126

EPDs:	CE	BW	WW	YW	MCE	MM	MW
	11.9	0.4	78.3	121.3	5.4	20.4	59.5
	CW	MARB	REA	API	TI		
	37.2	.47	.76	137	83		



## FF STEP UP H1428

ASA# 3728064 • BD: 2/28/20

Adj. BW: 81 lbs. • Adj. 205: 665 lbs.

Black • Polled • 3/4 Simmental • Bull

WS A STEP UP X27

FELT PURPLE REIGNS 717T

TNT EVER READY R232

D A R BLACKBIRD 503

FELT PURPLE STEPS UP

FF MS EVEREADY B168

EPDs:	CE	BW	WW	YW	MCE	MM	MW
	10.8	1.6	71.9	103.1	2.4	14.5	50.4
	CW	MARB	REA	API	TI		
	21.5	.17	.86	115	70		



## FF COWBOY CUT H1429

ASA# 3727976 • BD: 2/8/20

Adj. BW: 87 lbs. • Adj. 205: 765 lbs.

Black • Polled • 3/4 Simmental • Bull

TRIPLE C SINGLETARY S3H

CCR MS 4045 TIME 7322T

EXAR UPSHOT 0562B

FF MS FIGURE THIS P078

CCR COWBOY CUT 5048Z

FF MS UPSHOT B095

EPDs:	CE	BW	WW	YW	MCE	MM	MW
	10.5	3	93	136	6.9	29.6	76
	CW	MARB	REA	API	TI		
	43.6	.38	.94	142	87		



## FF ALL TIME H1456

ASA# 3728024 • BD: 2/17/20

Adj. BW: 79 lbs. • Adj. 205: 621 lbs.

Black • Polled • 3/4 Simmental • Heifer

MCM TOP GRADE 018X

OVAL F YIN Y26

ASR IMPRESSIVE Y162

FF MS FIG THIS T356

OVAL F ALL TIME A322

FF MS IMPRESSIVE B756

EPDs:	CE	BW	WW	YW	MCE	MM	MW
	10.7	0.5	74.4	111.9	7	26.5	63.7
	CW	MARB	REA	API	TI		
	32.1	.17	.70	125	74		

# YEARLING BULLS



## FF MS CB AX H1462

ASA# 3728082 • BD: 3/2/20  
Adj. BW: 69 lbs. • Adj. 205: 643 lbs.

Homo Black • Polled • 3/8 Simmental • Heifer

APEX COWBOY CUT SW172B

CCR COWBOY CUT 5048Z

AP RACHEL S172W

FF MS FINAL PRODUCT B851

CONNEALY FINAL PRODUCT

FF MS EXPLORER U401

EPDs:	CE	BW	WW	YW	MCE	MM	MW
	14.1	-1.4	66.9	100.2	9.4	25.1	58.5
	CW	MARB	REA	API	TI		
	28.4	.45	.32	138	76		



## FF STEP UP H1469

ASA# 3728112 • BD: 3/9/20  
Adj. BW: 75 lbs. • Adj. 205: 695 lbs.

Homo Black • Polled • 1/2 Simmental • Bull

FELT PURPLE STEPS UP

WS A STEP UP X27

FELT PURPLE REIGNS 717T

FF MS UPSHOT B769

EXAR UPSHOT 0562B

FF MS COMM T394

EPDs:	CE	BW	WW	YW	MCE	MM	MW
	12.3	1.2	72.2	108.1	5.8	19.2	55.3
	CW	MARB	REA	API	TI		
	35.1	.27	.83	124	74		



## FF GRADUATE 714 H1477

ASA# 3728059 • BD: 2/27/20  
Adj. BW: 75 lbs. • Adj. 205: 562 lbs.

Homo Black • Polled • 5/8 Simmental • Bull

FF GRADUATE D714

S D S GRADUATE 006X

FF MS INTEGRITY T074

FF MS TUITION B1177

TNT TUITION U238

FF MS ROOKIE Y777

EPDs:	CE	BW	WW	YW	MCE	MM	MW
	12.8	-0.5	62.3	99.3	7	22.1	53.2
	CW	MARB	REA	API	TI		
	29.5	.26	.61	125	70		



SDS GRADUATE - GRANDSIRE OF G1251



## FF CB AX H1480

ASA# 3728148 • BD: 3/25/20  
Adj. BW: 71 lbs. • Adj. 205: 828 lbs.

Homo Black • Polled • 5/8 Simmental • Bull

APEX COWBOY CUT SW172B

CCR COWBOY CUT 5048Z

AP RACHEL S172W

FF MS PAY DAY B780

FF PAY DAY Y110

FF MS FIGURE THIS T500

EPDs:	CE	BW	WW	YW	MCE	MM	MW
	13.6	0	76.3	113	8.8	31	69.1
	CW	MARB	REA	API	TI		
	33.3	.30	.57	139	79		



## FF COWBOY 1316 H1486

ASA# 3728110 • BD: 3/8/20  
Adj. BW: 73 lbs. • Adj. 205: 662 lbs.

Black • Polled • 5/8 Simmental • Bull

FF COWBOY CUT E1316

CCR COWBOY CUT 5048Z

FF MS RIGHT ANSWER A1116

FF MS BEEF B506

TRIPLE C BEEF MAKER

G L F PRIDE LUCY 6115

EPDs:	CE	BW	WW	YW	MCE	MM	MW
	13.5	0	80.3	126.9	7.9	24.6	64.7
	CW	MARB	REA	API	TI		
	34.1	.44	.52	148	85		

# YEARLING BULLS



## FF COWBOY 1316 H1519

ASA# 3728114 • BD: 3/12/20  
 Adj. BW: 79 lbs. • Adj. 205: 790 lbs.  
 Black • Polled • 1/2 Simmental • Bull  
 CCR COWBOY CUT 5048Z  
 FF MS RIGHT ANSWER A1116  
 HOOVER DAM  
 FF MS PREDESTINED U050

FF COWBOY CUT E1316

FF MS HOOVER C819

EPDs:	CE 12.5	BW 0.9	WW 89.4	YW 139.3	MCE 6.6	MM 25.1	MW 69.7
	CW 45.2	MARB .49	REA .67	API 153	TI 90		



## FF COWBOY H1539

ASA# 3728065 • BD: 2/28/20  
 Adj. BW: 80 lbs. • Adj. 205: 682 lbs.  
 Black • Polled • 5/8 Simmental • Bull  
 CCR COWBOY CUT 5048Z  
 FF MS DURAMAX W750  
 TSN PROTEGE Z896  
 FF MS 251U Z339

TTG COWBOY CUT B750

FF MS PROTEGE C1239

EPDs:	CE 11.2	BW 2	WW 89.7	YW 140.5	MCE 6.3	MM 23.7	MW 68.5
	CW 48.6	MARB .23	REA .74	API 135	TI 83		



## FF COWBOY CUT H1540

ASA# 3727984 • BD: 2/9/20  
 Adj. BW: 84 lbs. • Adj. 205: 702 lbs.  
 Black • Homo Polled • Purebred • Bull  
 TRIPLE C SINGLETARY S3H  
 CCR MS 4045 TIME 7322T  
 CCR COWBOY CUT 5048Z  
 FF MS PREDESTINED Y339

CCR COWBOY CUT 5048Z

FF MS COWBOY CUT C1140

EPDs:	CE 10	BW 4	WW 98.7	YW 145.8	MCE 6.4	MM 25.9	MW 75.2
	CW 46.8	MARB .48	REA 1.05	API 159	TI 96		



## FF COWBOY 1310 H1546

ASA# 3728153 • BD: 3/27/20  
 Adj. BW: 88 lbs. • Adj. 205: 674 lbs.  
 Black • Polled • Purebred • Bull

FF COWBOY CUT E1316

FF MS MAX C840

CCR COWBOY CUT 5048Z  
 FF MS RIGHT ANSWER A1116  
 FF BEEF MAX W594  
 FF MS FIGURE 4 U320

EPDs:	CE 9	BW 2.7	WW 84	YW 127	MCE 5.3	MM 18.5	MW 60.5
	CW 36.9	MARB .30	REA .71	API 144	TI 83		



## FF STEP UP H1556

ASA# 3728074 • BD: 3/1/20  
 Adj. BW: 81 lbs. • Adj. 205: 765 lbs.  
 Homo Black • Polled • 5/8 Simmental • Bull  
 WS A STEP UP X27  
 FELT PURPLE REIGNS 717T  
 EXAR UPSHOT 0562B  
 FF MS PREDESTINED X396

FELT PURPLE STEPS UP

FF MS UPSHOT C1056

EPDs:	CE 10.7	BW 3	WW 87.2	YW 134	MCE 5.2	MM 22	MW 65.6
	CW 42.6	MARB .32	REA .88	API 130	TI 82		

# YEARLING BULLS



## FF COWBOY H1579

ASA# 3728186 • BD: 4/5/20  
 Adj. BW: lbs. • Adj. 205: 734 lbs.  
 Black • Polled • 5/8 Simmental • Bull  
 CCR COWBOY CUT 5048Z  
 FF MS DURAMAX W750  
 S A V FINAL ANSWER 0035  
 FF MS DURA T539

TTG COWBOY CUT B750

FF MS FINAL ANSWER C779

EPDs:	CE	BW	WW	YW	MCE	MM	MW
	16	-0.8	74.9	113.1	9.5	26.3	63.7
	CW	MARB	REA	API	TI		
	32	.23	.43	137	77		



H1579



## FF STEP UP H1621

ASA# 3728155 • BD: 3/28/20  
 Adj. BW: 76 lbs. • Adj. 205: 680 lbs.  
 Homo Black • Polled • 3/4 Simmental • Bull  
 WS A STEP UP X27  
 FELT PURPLE REIGNS 717T  
 FELT SILVEIRASSTYLE 234Y  
 FF MS MACHO R053

FELT PURPLE STEPS UP

FF MS STYLE D163

EPDs:	CE	BW	WW	YW	MCE	MM	MW
	10.7	1.4	68.8	102.4	5.6	20.3	54.7
	CW	MARB	REA	API	TI		
	20.9	.20	.70	118	70		



## FF COWBOY 1316 H1624

ASA# 3728107 • BD: 3/7/20  
 Adj. BW: 74 lbs. • Adj. 205: 825 lbs.  
 Black • Polled • 1/2 Simmental • Bull  
 CCR COWBOY CUT 5048Z  
 FF MS RIGHT ANSWER A1116  
 EXAR COUNSEL 1016B  
 FF MS DUAL FOCUS

FF COWBOY CUT E1316

FF COUNSEL D1123

EPDs:	CE	BW	WW	YW	MCE	MM	MW
	12.8	0.7	93.3	145.3	6.4	26.5	73.1
	CW	MARB	REA	API	TI		
	48.4	.49	.71	150	93		



## FF ABILENE H1658

ASA# 3727968 • BD: 2/2/20  
 Adj. BW: 65 lbs. • Adj. 205: 646 lbs.  
 Homo Black • Polled • 3/4 Simmental • Bull  
 CCR PHENOM 8008A  
 CCR MS APPLE 9332W  
 TJ DURAMAX 100K  
 FF MS INFOCUS Y377

CCR ABILENE 6018C

FF MS DURAMAX D1159

EPDs:	CE	BW	WW	YW	MCE	MM	MW
	11.2	0.2	76.6	116.1	8.8	18.7	57
	CW	MARB	REA	API	TI		
	30.6	.46	.67	145	82		



CCR ABILENE 6018C - SIRE OF H1658



## FF MS JACK 1241 H1666

ASA# 3728084 • BD: 3/1/20  
 Adj. BW: 63 lbs. • Adj. 205: 740 lbs.  
 Hetero Black • Polled • 1/2 Simmental • Heifer  
 FF JACKHAMMER B412  
 FF MS SAKIC Z341  
 ASR IMPRESSIVE Y162  
 FF MS TRADER X764

FF JACK F1241

FF MS IMPRESSIVE D1060

EPDs:	CE	BW	WW	YW	MCE	MM	MW
	12.1	-1.3	76	104.6	6.1	24.4	62.4
	CW	MARB	REA	API	TI		
	20.8	.09	.58	120	74		



H1666

# YEARLING BULLS



## FF UNITED H1677

ASA# 3728001 • BD: 2/13/20  
Adj. BW: 69 lbs. • Adj. 205: 789 lbs.

Homo Black • Polled • 5/8 Simmental • Bull

W/C UNITED 956Y

TNT TUITION U238

MISS WERNING 956W

FF MS COWBOY CUT D1177

CCR COWBOY CUT 5048Z

FF MS ROOKIE Y777

EPDs:	CE	BW	WW	YW	MCE	MM	MW
	13.8	0.1	95.1	147.2	8.5	25.4	72.9
	CW	MARB	REA	API	TI		
	52.3	.24	.90	132	89		



## FF PAY DIRT H1680

ASA# 3728026 • BD: 2/18/20  
Adj. BW: 82 lbs. • Adj. 205: 674 lbs.

Homo Black • Polled • 1/2 Simmental • Bull

CCR PAY DIRT 2340C

BASIN PAYWEIGHT 1682

CCR MS SINGLETARY 2340Z

FF MS BEEF 782 D1380

FF BEEF Z782

FF MS BRILLIANCE A1180

EPDs:	CE	BW	WW	YW	MCE	MM	MW
	9.8	1.1	79.3	128.4	5.8	26.1	65.8
	CW	MARB	REA	API	TI		
	40.3	.52	.43	129	82		



## FF COWBOY 1316 H1681

ASA# 3728195 • BD: 4/21/20  
Adj. BW: lbs. • Adj. 205: 866 lbs.

Black • Polled • 3/4 Simmental • Bull

FF COWBOY CUT E1316

CCR COWBOY CUT 5048Z

FF MS RIGHT ANSWER A1116

FF MS AFTER SHOCK D631A

CLRS AFTER SHOCK 604 A

FF MS FREEDOM SM/AN R621

EPDs:	CE	BW	WW	YW	MCE	MM	MW
	9.7	3	96.7	146.1	5.1	23	71.3
	CW	MARB	REA	API	TI		
	40.8	.25	.72	134	86		



## FF IRON HIDE H1689

ASA# 3728034 • BD: 2/19/20  
Adj. BW: 79 lbs. • Adj. 205: 808 lbs.

Homo Black • Homo Polled • 5/8 Simmental • Bull

ACW IRONHIDE 395Y

REMINGTON LOCK N LOAD54U

DKF MISS NEW DEAL 205P

FF MS AFTER SHOCK D631B

CLRS AFTER SHOCK 604 A

FF MS FREEDOM SM/AN R621

EPDs:	CE	BW	WW	YW	MCE	MM	MW
	9.8	1.3	89.5	136.8	3.7	21.6	66.3
	CW	MARB	REA	API	TI		
	48.7	.12	.91	123	80		

# YEARLING BULLS



## FF PAY DAY H1710

ASA# 3728023 • BD: 2/17/20  
Adj. BW: 86 lbs. • Adj. 205: 821 lbs.

Homo Black • Polled • 1/2 Simmental • Bull

BASIN PAYWEIGHT 1682

CCR MS 4045 TIME 7322T

APEX COWBOY CUT SW172B

FF MS STYLE A110

CCR PAYDAY 0320C

FF MS CB AX E1310

EPDs:	CE	BW	WW	YW	MCE	MM	MW
	9.6	2.9	89.1	134.1	6	26.5	71
	CW	MARB	REA	API	TI		
	49.3	.36	.47	130	83		



LYNN, KEVIN, KOREY AND DANI FORSTER



## FF FRONT LINE H1724

ASA# 3727991 • BD: 2/11/20  
Adj. BW: 66 lbs. • Adj. 205: 608 lbs.

Homo Black • Polled • 5/8 Simmental • Bull

CDI MAINLINE 265D

HOOK'S CARINA 15C

HOOVER DAM

FF MS ROOKIE Y922

HOOK'S FRONTLINE 40F

FF MS HOOVER DAM E1122

EPDs:	CE	BW	WW	YW	MCE	MM	MW
	14.8	-1.9	70	110.2	7.2	21.9	56.8
	CW	MARB	REA	API	TI		
	34.3	.40	.72	148	80		

Like us on Facebook 

or  
check out our new website:  
**ForsterFarms.com**



## FF GOLD RUSH H1742

ASA# 3727978 • BD: 2/8/20  
Adj. BW: 67 lbs. • Adj. 205: 715 lbs.

Black • Homo Polled • 1/4 Simmental • Bull

V A R DISCOVERY 2240

V A R BLACKCAP 1059

AA RIGHT DESIGN211 OF717-704

TTG DURAMAX DATELINE A750

EZAR GOLD RUSH 6001

TTG DURAMAX E750

EPDs:	CE	BW	WW	YW	MCE	MM	MW
	15.5	-1.2	87.1	143.2	9.3	18.6	62.1
	CW	MARB	REA	API	TI		
	57	.62	.51	151	93		



H1742



## FF COWBOY 1316 H1743

ASA# 3728057 • BD: 2/27/20  
Adj. BW: 77 lbs. • Adj. 205: 630 lbs.

Black • Polled • 3/4 Simmental • Bull

CCR COWBOY CUT 5048Z

FF MS RIGHT ANSWER A1116

FELT PURPLE STEPS UP

FF MS TUITION Z1048

FF COWBOY CUT E1316

FF MS STEP UP E1243

EPDs:	CE	BW	WW	YW	MCE	MM	MW
	12.6	1.5	84.2	129.1	6.2	21	63.1
	CW	MARB	REA	API	TI		
	33.3	.32	.69	136	82		



H1743

# YEARLING BULLS



## FF COWBOY H1745

ASA# 3728075 • BD: 3/1/20  
 Adj. BW: 75 lbs. • Adj. 205: 626 lbs.  
 Black • Polled • 3/4 Simmental • Bull  
 CCR COWBOY CUT 5048Z  
 FF MS DURAMAX W750  
 FF BEEF Z782  
 FF MS RANGER T334

TTG COWBOY CUT B750

FF MS BEEF E744

CE	BW	WW	YW	MCE	MM	MW
14.5	-0.2	65.5	104.1	7.7	27.2	59.9
CW	MARB	REA	API	TI		
29.2	.26	.64	133	73		



## FF COWBOY 1316 H1746

ASA# 3728106 • BD: 3/7/20  
 Adj. BW: 76 lbs. • Adj. 205: 743 lbs.  
 Black • Polled • 5/8 Simmental • Bull  
 CCR COWBOY CUT 5048Z  
 FF MS RIGHT ANSWER A1116  
 FF FUSION R504  
 FF MS INFOCUS Y945

FF COWBOY CUT E1316

FF MS FUSION E1146

CE	BW	WW	YW	MCE	MM	MW
11.8	1.3	84.9	129.7	7.7	27.6	70
CW	MARB	REA	API	TI		
37.2	.31	.59	139	83		



## FF REDEMPTION H1754

ASA# 3727990 • BD: 2/11/20  
 Adj. BW: 76 lbs. • Adj. 205: 573 lbs.  
 Red • Polled • 3/8 Simmental • Bull  
 BECKTON NEBULA P P707  
 JYJ MSJOLENE W16  
 WS PRIME BEEF Z8  
 FF MS SAM A954

BROWN JYJ REDEMPTION Y1334

FF MS PRIME BEEF E1354

CE	BW	WW	YW	MCE	MM	MW
13.2	-2.3	64.6	109	6.9	21.5	53.8
CW	MARB	REA	API	TI		
21.3	.45	.30	135	76		



## FF COWBOY H1788

ASA# 3728054 • BD: 2/27/20  
 Adj. BW: 79 lbs. • Adj. 205: 734 lbs.  
 Black • Polled • Purebred • Bull  
 CCR COWBOY CUT 5048Z  
 FF MS DURAMAX W750  
 FELT GOT GAME  
 FF MS FIGURE THIS R518

TTG COWBOY CUT B750

FF MS GOT GAME E528

CE	BW	WW	YW	MCE	MM	MW
12.1	1.2	76.6	113.1	6	30.1	68.4
CW	MARB	REA	API	TI		
31.7	.11	.85	133	78		



## FF MS THE ROCK H1812

ASA# 3727999 • BD: 2/13/20  
 Adj. BW: 69 lbs. • Adj. 205: 673 lbs.  
 Black • Polled • 5/8 Simmental • Bull  
 J BAR J NIGHTRIDE 225Z  
 GIBBS 2524Z FANCY R820  
 W/C UNITED 956Y  
 FF MS STEP UP D1033

GIBBS 4091B THE ROCK

FF MS UNITED F1622

CE	BW	WW	YW	MCE	MM	MW
15.1	-1.9	77.3	125.6	8.5	16.5	55.1
CW	MARB	REA	API	TI		
44.2	.15	.87	132	78		



# YEARLING BULLS



## FF HICKOK HH1814

ASA# 3728016 • BD: 2/16/20  
 Adj. BW: 71 lbs. • Adj. 205: 666 lbs.  
 Black • Polled • 1/4 Simmental • Bull  
 CONNEALY CONSENSUS 7229  
 MILL BAR BEMINDFUL MAID 6304  
 W/C UNITED 956Y  
 FF MS GRADUATE D1414

MILL BAR HICKOK 7242

FF MS UNITED F1614

EPDs:	CE	BW	WW	YW	MCE	MM	MW
	16.1	-1.8	83.6	134	7.9	20.3	62
	CW	MARB	REA	API	TI		
	49.8	.37	.65	138	85		



MILL BAR HICKOK 7242 - REFERENCE SIRE



## FF HICKOK H1820

ASA# 3728033 • BD: 2/19/20  
 Adj. BW: 81 lbs. • Adj. 205: 909 lbs.  
 Black • Polled • 3/8 Simmental • Bull  
 CONNEALY CONSENSUS 7229  
 MILL BAR BEMINDFUL MAID 6304  
 FF COWBOY CUT D1210  
 FF MS UPSHOT B095

MILL BAR HICKOK 7242

FF MS COWBOY 1210 F1429

EPDs:	CE	BW	WW	YW	MCE	MM	MW
	15.1	0.3	98.2	148.2	8	29.8	78.9
	CW	MARB	REA	API	TI		
	53.7	.51	.78	152	95		



H1820



## FF PAY DIRT H1840

ASA# 3728044 • BD: 2/22/20  
 Adj. BW: 81 lbs. • Adj. 205: 736 lbs.  
 Homo Black • Polled • 5/8 Simmental • Bull  
 BASIN PAYWEIGHT 1682  
 CCR MS SINGLETARY 2340Z  
 CCR 2108 GRADUATE 0043B  
 FF MS 251U Z339

CCR PAY DIRT 2340C

FF MS MASTER F1239

EPDs:	CE	BW	WW	YW	MCE	MM	MW
	10	2.4	94.7	151.3	6.7	28.5	75.8
	CW	MARB	REA	API	TI		
	53.3	.45	.68	139	91		



CCR PAY DIRE 2340C - SIRE OF H1840



## FF CADILLAC H1855

ASA# 3728017 • BD: 2/17/20  
 Adj. BW: 83 lbs. • Adj. 205: 628 lbs.  
 Red • Polled • 3/8 Simmental • Bull  
 HOOKS TRINITY 9T  
 REMPE STABILIZER YD032  
 ASR IMPRESSIVE Y162  
 FF MS RUSHMORE C405

LEACHMAN CADILLAC L025A

FF MS IMPRESSIVE F1555

EPDs:	CE	BW	WW	YW	MCE	MM	MW
	14.1	-1.4	68.1	108.7	7.3	23	57
	CW	MARB	REA	API	TI		
	22.9	.26	.56	118	73		



## FF FRONTLINE H1856

ASA# 3728002 • BD: 2/13/20  
 Adj. BW: 72 lbs. • Adj. 205: 697 lbs.  
 Homo Black • Polled • 5/8 Simmental • Bull  
 CDI MAINLINE 265D  
 HOOK'S CARINA 15C  
 CARTER'S COUNTERWEIGHT  
 FF MS PAYOFF U396

HOOK'S FRONTLINE 40F

FF MS COUNTER WT F856

EPDs:	CE	BW	WW	YW	MCE	MM	MW
	13.8	-0.4	80.7	123.7	8	26.3	66.6
	CW	MARB	REA	API	TI		
	38.6	.37	.61	143	84		

# YEARLING BULLS



## FF THE ROCK H1858

ASA# 3728045 • BD: 2/22/20  
Adj. BW: 82 lbs. • Adj. 205: 728 lbs.

Homo Black • Polled • 5/8 Simmental • Bull

GIBBS 4091B THE ROCK

J BAR J NIGHTRIDE 225Z  
GIBBS 2524Z FANCY R820

FF CB 1210 F1557

FF COWBOY CUT D1210  
FF MS WIDE TRK LADY C956

	<b>CE</b>	<b>BW</b>	<b>WW</b>	<b>YW</b>	<b>MCE</b>	<b>MM</b>	<b>MW</b>
EPDs:	13.3	0.4	81.2	125.9	7.6	21.9	62.4
	<b>CW</b>	<b>MARB</b>	<b>REA</b>	<b>API</b>	<b>TI</b>		
	39.4	.21	.88	132	80		



## FF THE ROCK H1861A

ASA# 3728019 • BD: 2/17/20  
Adj. BW: 59 lbs. • Adj. 205: 528 lbs.

Homo Black • Polled • 5/8 Simmental • Bull

GIBBS 4091B THE ROCK

J BAR J NIGHTRIDE 225Z  
GIBBS 2524Z FANCY R820

FF MS SHARP 1079 F1061

FF SHOOTER C1079  
FF MS RELIANCE X401

	<b>CE</b>	<b>BW</b>	<b>WW</b>	<b>YW</b>	<b>MCE</b>	<b>MM</b>	<b>MW</b>
EPDs:	14.9	-1.7	72.2	115.9	9.1	21.4	57.4
	<b>CW</b>	<b>MARB</b>	<b>REA</b>	<b>API</b>	<b>TI</b>		
	37.6	.21	.72	138	77		



## FF THE ROCK H1875

ASA# 3728022 • BD: 2/17/20  
Adj. BW: 71 lbs. • Adj. 205: 687 lbs.

Homo Black • Polled • 5/8 Simmental • Bull

GIBBS 4091B THE ROCK

J BAR J NIGHTRIDE 225Z  
GIBBS 2524Z FANCY R820

FF MS GRAD 714 F1285

FF GRADUATE D714  
FF MS SHARPER IMAGE Z885

	<b>CE</b>	<b>BW</b>	<b>WW</b>	<b>YW</b>	<b>MCE</b>	<b>MM</b>	<b>MW</b>
EPDs:	14.6	-1.7	71.4	113.8	8.7	22.7	58.4
	<b>CW</b>	<b>MARB</b>	<b>REA</b>	<b>API</b>	<b>TI</b>		
	38.7	.19	.81	135	76		



## FF HICKOK H1879

ASA# 3728038 • BD: 2/21/20  
Adj. BW: 75 lbs. • Adj. 205: 618 lbs.

Black • Polled • 1/2 Simmental • Bull

MILL BAR HICKOK 7242

CONNEALY CONSENSUS 7229  
MILL BAR BEMINDFUL MAID 6304

FF MS STEP UP F1379

FELT PURPLE STEPS UP  
FF MS PAY DAY A779

	<b>CE</b>	<b>BW</b>	<b>WW</b>	<b>YW</b>	<b>MCE</b>	<b>MM</b>	<b>MW</b>
EPDs:	15.7	-0.3	77.6	118.5	6.6	20.1	58.8
	<b>CW</b>	<b>MARB</b>	<b>REA</b>	<b>API</b>	<b>TI</b>		
	40.7	.38	.69	141	82		



## FF TEAR DROP H1882

ASA# 3728115 • BD: 3/12/20  
Adj. BW: 71 lbs. • Adj. 205: 628 lbs.

Homo Black • Polled • 5/8 Simmental • Bull

TJ TEARDROP 783F

TJ MAIN EVENT 503B  
TJ MS 38W

FF MS COWBOY CUT F782

CCR COWBOY CUT 5048Z  
T7107

	<b>CE</b>	<b>BW</b>	<b>WW</b>	<b>YW</b>	<b>MCE</b>	<b>MM</b>	<b>MW</b>
EPDs:	15.3	-0.6	78.9	120.9	7.3	32.8	72.2
	<b>CW</b>	<b>MARB</b>	<b>REA</b>	<b>API</b>	<b>TI</b>		
	39.3	.29	.72	141	82		



## FF PAY DAY H1885

ASA# 3728050 • BD: 2/24/20  
Adj. BW: 73 lbs. • Adj. 205: 704 lbs.

Homo Black • Polled • 5/8 Simmental • Bull

CCR PAYDAY 0320C

BASIN PAYWEIGHT 1682  
CCR MS 4045 TIME 7322T

FF MS COWBOY F885

CCR COWBOY CUT 5048Z  
FF MS NET WORTH U555

	<b>CE</b>	<b>BW</b>	<b>WW</b>	<b>YW</b>	<b>MCE</b>	<b>MM</b>	<b>MW</b>
EPDs:	11.7	1.5	84.6	122.7	6.7	24.8	67.1
	<b>CW</b>	<b>MARB</b>	<b>REA</b>	<b>API</b>	<b>TI</b>		
	46.8	.36	.59	136	82		

**THANK YOU**  
**FOR ATTENDING THE 42ND**  
**FORSTER FARMS**  
**SIMMENTAL PRODUCTION SALE**

# YEARLING BULLS



## FF IRON HIDE H1886

ASA# 3728043 • BD: 2/22/20  
Adj. BW: 65 lbs. • Adj. 205: 660 lbs.

Homo Black • Polled • 1/2 Simmental • Bull

REMINGTON LOCK N LOAD54U

DKF MISS NEW DEAL 205P

FF BEEF Z782

FF MS PARAMOUNT B1282

ACW IRONHIDE 395Y

FF1482

EPDs:	CE	BW	WW	YW	MCE	MM	MW
	13.8	-2.4	69.9	113.5	5.8	26.6	61.5
	CW	MARB	REA	API	TI		
	38.9	.22	.73	132	77		



# FELT GETCHA SUM G113

## FORSTER FARMS NEW HERDSIRE



# YEARLING HEIFERS



**"DOC" GREAT GRANDPA GEORGE FORSTER**  
DRAFT STUD, IN THE 1930S



## FF MS STEP UP H815

ASA# 3728120 • BD: 3/14/20  
Adj. BW: 71 lbs. • Adj. 205: 538 lbs.  
Black • Polled • 3/4 Simmental • Heifer

FELT PURPLE STEPS UP

WS A STEP UP X27  
FELT PURPLE REIGNS 717T

FF MS HOF U086

BS MR HALL OF FAME N497  
FF MS LARKS CANYON M106

EPDs:	CE	BW	WW	YW	MCE	MM	MW
	11.2	0.9	65.7	96.4	5	20	52.8
	CW	MARB	REA	API	TI		
	16.4	.10	.81	116	66		



## FF MS COWBOY 1316 H770

ASA# 3728099 • BD: 3/4/20  
Adj. BW: 67 lbs. • Adj. 205: 546 lbs.  
Black • Polled • 5/8 Simmental • Heifer

FF COWBOY CUT E1316

CCR COWBOY CUT 5048Z

FF MS PROTOTYPE SM/AN T4

FF MS RIGHT ANSWER A1116

RDDS FUTUREPROTOTYPE 13M  
N554

EPDs:	CE	BW	WW	YW	MCE	MM	MW
	14.2	-0.1	70.8	104.8	8.8	28	63.4
	CW	MARB	REA	API	TI		
	29.5	.44	.55	145	79		



## FF MS ALL TIME H905

ASA# 3728102 • BD: 3/5/20  
Adj. BW: 76 lbs. • Adj. 205: 542 lbs.  
Black • Polled • Purebred • Heifer

OVAL F ALL TIME A322

MCM TOP GRADE 018X  
OVAL F YIN Y26

FF MS BEEF MAX W035

FF PREF BEEF S591

FF MS HIGH TIME H034

EPDs:	CE	BW	WW	YW	MCE	MM	MW
	9.4	2.3	71.1	106.5	5.7	33.5	69.1
	CW	MARB	REA	API	TI		
	32.9	.12	.68	129	73		



**H1443**



## FF GRADUATE 714 H1443

ASA# 3728078 • BD: 3/2/20  
Adj. BW: 71 lbs. • Adj. 205: 651 lbs.  
Black • Polled • 5/8 Simmental • Heifer

FF GRADUATE D714

S D S GRADUATE 006X

FF MS INTEGRITY T074

FF MS BEEF B843

TRIPLE C BEEF MAKER

FF MS FUSION U283

EPDs:	CE	BW	WW	YW	MCE	MM	MW
	13	0.1	71.4	113.7	8	25.5	61.2
	CW	MARB	REA	API	TI		
	31	.14	.78	128	73		



## FF MS STEP UP H1450

ASA# 3728201 • BD: 4/29/20  
Adj. BW: lbs. • Adj. 205: 580 lbs.  
Homo Black • Polled • Purebred • Heifer

FELT PURPLE STEPS UP

WS A STEP UP X27  
FELT PURPLE REIGNS 717T

FF MS DREAM ON B1050

CNS DREAM ON L186  
LHT MS MACHO 28X

EPDs:	CE	BW	WW	YW	MCE	MM	MW
	12.7	0.9	70.7	102.2	5.4	17.8	53.1
	CW	MARB	REA	API	TI		
	18.7	.12	.88	127	74		

## FF STEP UP H1459

ASA# 3728096 • BD: 3/4/20  
Adj. BW: 72 lbs. • Adj. 205: 652 lbs.  
Homo Black • Polled • 5/8 Simmental • Bull

FELT PURPLE STEPS UP

WS A STEP UP X27  
FELT PURPLE REIGNS 717T

FF MS HOOVER B959

HOOVER DAM

FF MS EXPLORER W430

EPDs:	CE	BW	WW	YW	MCE	MM	MW
	11.4	0.7	68.4	105.4	3	19.8	54
	CW	MARB	REA	API	TI		
	26.4	.36	.78	132	74		

# YEARLING HEIFERS



## FF MS COWBOY 1316 H1470

ASA# 3728211 • BD: 5/11/20  
Adj. BW: lbs. • Adj. 205: 773 lbs.

Black • Polled • 3/4 Simmental • Heifer

FF COWBOY CUT E1316

CCR COWBOY CUT 5048Z  
FF MS RIGHT ANSWER A1116

FF MS FIGURE THIS B1270

HHSF FIGURE THIS  
FF MS FINAL CHOICE Z1070

EPDs:	CE	BW	WW	YW	MCE	MM	MW
	11.1	2.4	89.5	135.7	7.1	25.8	70.5
	CW	MARB	REA	API	TI		
	31.4	.39	.70	146	86		



## FF MS PAYDAY 815 H1512

ASA# 3728192 • BD: 4/16/20  
Adj. BW: lbs. • Adj. 205: 433 lbs.

Homo Black • Polled • 5/8 Simmental • Heifer

FF PAY DAY C815

FF PAY DAY Y110  
FF MS HOF U086

FF MS HIGH REGARD C052

YARDLEY HIGH REGARD W242  
FF MS NEW DESIGN P063

EPDs:	CE	BW	WW	YW	MCE	MM	MW
	9.6	0.4	54.1	79	5.5	23.2	50.3
	CW	MARB	REA	API	TI		
	17.6	.19	.59	119	61		



## FF COWBOY 1316 H1516

ASA# 3728190 • BD: 4/20/20  
Adj. BW: lbs. • Adj. 205: 647 lbs.

Black • Polled • Purebred • Bull

FF COWBOY CUT E1316

CCR COWBOY CUT 5048Z  
FF MS RIGHT ANSWER A1116

FF MS TURN POINT C816

LRS TURNING POINT 3117A  
FF DURA U036

EPDs:	CE	BW	WW	YW	MCE	MM	MW
	10.9	0.9	78.7	120.4	6.4	26.9	66.2
	CW	MARB	REA	API	TI		
	37.2	.31	.86	146	84		



## FF MS STEP UP H1530

ASA# 3728136 • BD: 3/19/20  
Adj. BW: 63 lbs. • Adj. 205: 570 lbs.

Homo Black • Polled • 5/8 Simmental • Heifer

FELT PURPLE STEPS UP

WS A STEP UP X27  
FELT PURPLE REIGNS 717T

FF MS PAYOFF C1020

T J PAYOFF S66  
FF MS RELIANCE X129

EPDs:	CE	BW	WW	YW	MCE	MM	MW
	13.8	-0.3	74.3	110.1	5.1	21.4	58.5
	CW	MARB	REA	API	TI		
	33.3	.25	.76	134	77		



## FF MS DAYDAY 815 H1612

ASA# 3728161 • BD: 3/31/20  
Adj. BW: 68 lbs. • Adj. 205: 607 lbs.

Homo Black • Polled • 5/8 Simmental • Heifer

FF PAY DAY C815

FF PAY DAY Y110  
FF MS HOF U086

FF MS PROTEGE D912

TSN PROTEGE Z896  
FF MS HALL OF FAME W080

EPDs:	CE	BW	WW	YW	MCE	MM	MW
	10.3	1	76.6	113.3	5.5	20.4	58.7
	CW	MARB	REA	API	TI		
	30.4	.22	.69	130	75		



## FF MS PAYDAY 815 H1659

ASA# 3728185 • BD: 4/9/20  
Adj. BW: lbs. • Adj. 205: 684 lbs.

Homo Black • Polled • 1/2 Simmental • Heifer

FF PAY DAY C815

FF PAY DAY Y110  
FF MS HOF U086

FF MS PREDEST 338 D959

FF PREDESTINED Y338  
FF MS EXPLORER W430

EPDs:	CE	BW	WW	YW	MCE	MM	MW
	10.6	1.5	69.5	103.8	5.9	21.2	56
	CW	MARB	REA	API	TI		
	22.9	.39	.45	134	74		



## FF MS FRONTLINE H1679

ASA# 3728025 • BD: 2/18/20  
Adj. BW: 75 lbs. • Adj. 205: 746 lbs.

Homo Black • Polled • Purebred • Heifer

HOOK'S FRONTLINE 40F

CDI MAINLINE 265D  
HOOK'S CARINA 15C

FF MS STEP UP D779

FELT PURPLE STEPS UP  
FF MS DURA T539

EPDs:	CE	BW	WW	YW	MCE	MM	MW
	12.9	0.7	86.2	127.7	6.4	26.3	69.4
	CW	MARB	REA	API	TI		
	35.2	.23	1.02	146	87		



# YEARLING HEIFERS



## FF TEAR DROP H1686

ASA# 3728035 • BD: 2/19/20  
Adj. BW: 81 lbs. • Adj. 205: 621 lbs.  
Homo Black • Polled • Purebred • Bull

TJ TEARDROP 783F

TJ MAIN EVENT 503B

TJ MS 38W

FF MS TURNING PTXLB D876

LRS TURNING POINT 3117A

ZKCC COW 550X

	CE	BW	WW	YW	MCE	MM	MW
EPDs:	11.8	1	81.9	127.8	5.1	28.8	69.8
	CW	MARB	REA	API	TI		
	41.2	.12	.87	125	78		



## FF MS STEP UP H1688

ASA# 3728118 • BD: 3/13/20  
Adj. BW: 77 lbs. • Adj. 205: 701 lbs.

Homo Black • Polled • 1/2 Simmental • Heifer

FELT PURPLE STEPS UP

WS A STEP UP X27

FELT PURPLE REIGNS 717T

FF MS GRADUATE ET D540

S D S GRADUATE 006X

FF MS FREEDOM SM/AN R621

	CE	BW	WW	YW	MCE	MM	MW
EPDs:	10.4	1.4	82.5	123.9	4	23.9	65.1
	CW	MARB	REA	API	TI		
	31	.06	1.12	120	76		



## FF MS GRADUATE 714 H1716

ASA# 3728197 • BD: 4/23/20  
Adj. BW: lbs. • Adj. 205: 580 lbs.

Black • Polled • 5/8 Simmental • Heifer

FF GRADUATE D714

S D S GRADUATE 006X

FF MS INTEGRITY T074

FF MS PAY DAY E815

FF PAY DAY Y110

FF MS HOF U086

	CE	BW	WW	YW	MCE	MM	MW
EPDs:	13.9	-1.4	62.1	92.9	8.1	25.7	56.7
	CW	MARB	REA	API	TI		
	23.5	.18	.60	129	69		



## FF GOT GAME H1722

ASA# 3728168 • BD: 4/3/20  
Adj. BW: 73 lbs. • Adj. 205: 617 lbs.

Black • Polled • 5/8 Simmental • Bull

FELT GOT GAME

R&R CHAMBERLAIN X744

SVF SHEZA GLORY T912

FF MS PAYOFF E922

T J PAYOFF S66

FF MS EXPLORER W722

	CE	BW	WW	YW	MCE	MM	MW
EPDs:	10.9	1.5	71.2	106	4.2	22.2	57.8
	CW	MARB	REA	API	TI		
	32.2	.18	.55	118	70		



## FF MS PAYDAY 815 H1760

ASA# 3728163 • BD: 4/1/20  
Adj. BW: 70 lbs. • Adj. 205: 548 lbs.

Homo Black • Polled • 5/8 Simmental • Heifer

FF PAY DAY C815

FF PAY DAY Y110

FF MS HOF U086

FF SANTA FE E1460

CCR SANTA FE 9349Z

FF MS SHOOTER B951

	CE	BW	WW	YW	MCE	MM	MW
EPDs:	10.6	0.4	65.8	96.8	7.1	20.2	53
	CW	MARB	REA	API	TI		
	19.6	.15	.49	122	67		



## FF MS PAYDAY 815 H1772

ASA# 3728116 • BD: 3/13/20  
Adj. BW: 64 lbs. • Adj. 205: 541 lbs.

Black • Polled • 3/4 Simmental • Heifer

FF PAY DAY C815

FF PAY DAY Y110

FF MS HOF U086

FF TURN POINT X LB E1470

LRS TURNING POINT 3117A

ZKCC COW 550X

	CE	BW	WW	YW	MCE	MM	MW
EPDs:	10.6	0.2	63.7	94.5	6.1	23.3	55.2
	CW	MARB	REA	API	TI		
	20.8	.17	.70	117	68		



## FF MS COWBOY 1316 H1785

ASA# 3728164 • BD: 4/2/20  
Adj. BW: 74 lbs. • Adj. 205: 647 lbs.

Black • Polled • 5/8 Simmental • Heifer

FF COWBOY CUT E1316

CCR COWBOY CUT 5048Z

FF MS RIGHT ANSWER A1116

FF MS STEP UP E980

FELT PURPLE STEPS UP

YARDLEY AMELIA BEDILIA W72

	CE	BW	WW	YW	MCE	MM	MW
EPDs:	11.6	2	87	130.1	5.8	21.9	65.3
	CW	MARB	REA	API	TI		
	36.6	.36	.64	135	84		

# YEARLING HEIFERS



## FF MS FRONT LINE H1789

ASA# 3727974 • BD: 2/8/20  
Adj. BW: 60 lbs. • Adj. 205: 596 lbs.

Homo Black • Polled • 3/4 Simmental • Heifer

HOOK'S FRONTLINE 40F

CDI MAINLINE 265D

HOOK'S CARINA 15C

FF MS GRADUATE G1490

S D S GRADUATE 006X

PVSB MS PREDESTINED 653B

EPDs:	CE	BW	WW	YW	MCE	MM	MW
	15.1	-2.4	72.3	110.6	8	25.9	62
	CW	MARB	REA	API	TI		
	29.1	.32	.89	147	81		



H1789



## FF MS ABILENE H1823

ASA# 3728028 • BD: 2/18/20  
Adj. BW: 84 lbs. • Adj. 205: 611 lbs.

Black • Polled • 1/2 Simmental • Heifer

CCR ABILENE 6018C

CCR PHENOM 8008A

CCR MS APPLE 9332W

FF MS COUNTERWT F1033

CARTER'S COUNTERWEIGHT

X053

EPDs:	CE	BW	WW	YW	MCE	MM	MW
	11.6	2.5	84.2	132.2	9	16.8	58.8
	CW	MARB	REA	API	TI		
	40.6	.59	.52	148	86		



H1823



## FF PERCEPTION H1863

ASA# 3728077 • BD: 3/2/20  
Adj. BW: 71 lbs. • Adj. 205: 543 lbs.

Red • Homo Polled • 5/8 Simmental • Heifer

CDI PERCEPTION 254E

CDI PERSPECTIVE 238A

CDI MISS POWER GRID 30C

FF MS IMPRESSIVE

ASR IMPRESSIVE Y162

FF MS SAM C403

EPDs:	CE	BW	WW	YW	MCE	MM	MW
	12.3	-1.3	65.9	99.6	7	22.5	55.4
	CW	MARB	REA	API	TI		
	15.5	.19	.50	128	71		



CDI PERCEPTION 254E - SIRE OF H1863



## FF MS BOULDER H1884

ASA# 3728036 • BD: 2/20/20  
Adj. BW: 74 lbs. • Adj. 205: lbs.

Black • Polled • 5/8 Simmental • Heifer

CCR BOULDER 1339A

HOOVER DAM

CCR MS L TAYLOR 1339Y

FF MS COWBOY 1210 F1484

FF COWBOY CUT D1210

FF MS EVEREADY B784

EPDs:	CE	BW	WW	YW	MCE	MM	MW
	13.3	-0.8	74.1	111.3	7.8	26	63
	CW	MARB	REA	API	TI		
	23.2	.45	.85	147	83		



H1884

# BRED HEIFERS

All Bred heifers were pasture exposed to FF NIGHTRIDE F1685, ASA# 3505208, from 6/12/20 to 7/30/20.

All were pregnancy checked by Republican Valley Vet, Dr. Jeremy Van Boening, 308-920-0617 on 7/26/19.

The approximate calving dates were derived from the ultrasound results.



## FF MS STEP UP G052

ASA# 3661244 • BD: 3/5/19

Adj. BW: 75 lbs. • Adj. 205: 527 lbs.

Black • Polled • 3/4 Simmental • Heifer

WS A STEP UP X27

FELT PURPLE REIGNS 717T

BON VIEW NEW DESIGN 878

FF MS JALAINÉ J062

EPDs:	CE	BW	WW	YW	MCE	MM	MW
	10.9	1.9	66.1	93	6.1	23	56
	CW	MARB	REA	API	TI		
	16.5	.25	.69	122	69		

Pasture exposed to FF NIGHTRIDE F1685. Due 4/1/21.



## FF MS COWBOY CUT G843

ASA# 3661124 • BD: 2/5/19

Adj. BW: 79 lbs. • Adj. 205: 614 lbs.

Black • Polled • 3/4 Simmental • Heifer

TRIPLE C SINGLETARY S3H

CCR MS 4045 TIME 7322T

FF FUSION R504

WILSON PRIDE 2917

CCR COWBOY CUT 5048Z

FF MS FUSION U283

EPDs:	CE	BW	WW	YW	MCE	MM	MW
	11	2.7	88.1	135.2	6.8	26.8	70.8
	CW	MARB	REA	API	TI		
	45	.29	.79	136	83		

Pasture exposed to FF NIGHTRIDE F1685. Due 4/5/21.



## FF BEEF G876

ASA# 3661389 • BD: 4/17/19

Adj. BW: 81 lbs. • Adj. 205: 516 lbs.

Black • Polled • 1/2 Simmental • Heifer

TRIPLE C BEEF MAKER

T7107

GW LUCKY MAN 644N

G L F PRIDE LUCY 6115

FF BEEF Z782

FF MS LUCKY MAN U506

EPDs:	CE	BW	WW	YW	MCE	MM	MW
	12.4	0.2	68.7	115.1	7.4	28.7	63
	CW	MARB	REA	API	TI		
	30.2	.41	.33	135	77		

AI bred 5/20/20 to TJ FRANCHISE 451D. Due 2/27/21.



## FF MS GOT GAME G976

ASA# 3661233 • BD: 3/2/19

Adj. BW: 65 lbs. • Adj. 205: 491 lbs.

Black • Polled • Purebred • Heifer

R&R CHAMBERLAIN X744

SVF SHEZA GLORY T912

CNS DREAM ON L186

FF MS JOKER P526

FELT GOT GAME

FF MS DREAM-ON W526

EPDs:	CE	BW	WW	YW	MCE	MM	MW
	13.3	-0.1	63.1	92.5	6.2	24.3	55.8
	CW	MARB	REA	API	TI		
	20.2	-.03	.86	119	68		

Pasture exposed to FF NIGHTRIDE F1685. Due 4/3/21.



## FF MS GOT GAME G983

ASA# 3661342 • BD: 4/1/19

Adj. BW: 75 lbs. • Adj. 205: 467 lbs.

Black • Polled • 3/4 Simmental • Heifer

R&R CHAMBERLAIN X744

SVF SHEZA GLORY T912

T J PAYOFF S66

N613

FELT GOT GAME

FF MS PAYOFF W573

EPDs:	CE	BW	WW	YW	MCE	MM	MW
	9.7	1.7	71	104	2.8	23.3	58.7
	CW	MARB	REA	API	TI		
	31.7	.02	.71	109	66		

Pasture exposed to FF NIGHTRIDE F1685. Due 3/26/21.



## FF MS MAIN EVENT G1046

ASA# 3661297 • BD: 3/17/19

Adj. BW: 73 lbs. • Adj. 205: 509 lbs.

Black • Polled • 1/2 Simmental • Heifer

MR NLC UPGRADE U8676

TJ MISS NEW DAY U14

FELT NEXT BIG THING 54T

S200

TJ MAIN EVENT 503B

FF MS BIG THING X342

EPDs:	CE	BW	WW	YW	MCE	MM	MW
	12.3	0.4	71.9	107.7	6.1	29.2	65.2
	CW	MARB	REA	API	TI		
	33.2	.28	.54	124	76		

AI bred 5/20/20 to HOOK'S FRONTLINE 40F. Due 2/27/21.



## FF MS GOT GAME G1085

ASA# 3661392 • BD: 4/20/19

Adj. BW: 85 lbs. • Adj. 205: 672 lbs.

Black • Polled • 3/4 Simmental • Heifer

R&R CHAMBERLAIN X744

SVF SHEZA GLORY T912

MYTTY IN FOCUS

FF MS LUCKY MAN U621

FELT GOT GAME

FF INFOCUS X881

EPDs:	CE	BW	WW	YW	MCE	MM	MW
	9.9	2	74.7	111.7	4.7	24.5	61.9
	CW	MARB	REA	API	TI		
	29.2	.19	.62	119	72		

Pasture exposed to FF NIGHTRIDE F1685. Due 5/3/21.



# BRED HEIFERS



## FF MS BOULDER G1218

ASA# 3661140 • BD: 2/9/19

Adj. BW: 67 lbs. • Adj. 205: 397 lbs.

Black • Polled • 5/8 Simmental • Heifer

HOOVER DAM

CCR MS L TAYLOR 1339Y

FF PROTOTYPE SM/AN T508

FF MS FORTUNE 500 L018

CCR BOULDER 1339A

FF MS PROTO 508 Z048

	CE	BW	WW	YW	MCE	MM	MW
EPDs:	14.5	-2.9	48.2	72.1	8.5	21.7	45.8
	CW	MARB	REA	API	TI		
	7.3	.46	.52	140	70		

AI bred 5/11/20 to W/C UNITED 956Y. Due 2/18/21.



CCR BOULDER 1339A - SIRE OF G1218



## FF MS JACK 412 G1241

ASA# 3661319 • BD: 3/23/19

Adj. BW: 83 lbs. • Adj. 205: 639 lbs.

Red • Polled • 1/2 Simmental • Heifer

HXC JACKHAMMER 8800U

FF MS FIGURE THIS ND R40

RED SIX MILE SAKIC 832S

FF MS FIGURE THIS ND R32

FF JACKHAMMER B412

FF MS SAKIC Z341

	CE	BW	WW	YW	MCE	MM	MW
EPDs:	7.8	2.3	78.7	100.4	5.8	24.5	63.8
	CW	MARB	REA	API	TI		
	16.2	.13	.32	111	71		

Pasture exposed to FF NIGHTRIDE F1685. Due 3/21/21.



## FF MS BEEF 782 G1274

ASA# 3661345 • BD: 4/4/19

Adj. BW: 71 lbs. • Adj. 205: 532 lbs.

Black • Polled • 1/2 Simmental • Heifer

TRIPLE C BEEF MAKER

T7107

TC ABERDEEN 759

FF MS DURAMAX M604

FF BEEF Z782

FF MS ABERDEEN Z604

	CE	BW	WW	YW	MCE	MM	MW
EPDs:	15.1	-2.4	58.9	99.2	8.5	30.4	59.8
	CW	MARB	REA	API	TI		
	27.7	.36	.57	138	74		

AI bred 5/12/20 to W/C UNITED 956Y. Due 2/19/21.



W/C UNITED 956Y - AI SIRE OF G1274'S PREGNANCY



## FF MS ABILENE G1280

ASA# 3661149 • BD: 2/10/19

Adj. BW: 77 lbs. • Adj. 205: 623 lbs.

Black • Polled • 5/8 Simmental • Heifer

CCR PHENOM 8008A

CCR MS APPLE 9332W

CONNEALY FINAL PRODUCT

FF MS FIGURE FOUR U604

CCR ABILENE 6018C

FF MS FINAL PRODUCT Z880

	CE	BW	WW	YW	MCE	MM	MW
EPDs:	10.6	1.3	84.6	139.6	8.8	17.5	59.7
	CW	MARB	REA	API	TI		
	42.6	.49	.75	147	87		

AI bred 5/12/20 to W/C UNITED 956Y. Due 2/19/21.



H1280

# BRED HEIFERS



## FF STEP UP G1361

ASA# 3661386 • BD: 4/17/19  
Adj. BW: lbs. • Adj. 205: 573 lbs.

Black • Polled • 3/4 Simmental • Heifer

FELT PURPLE STEPS UP

WS A STEP UP X27  
FELT PURPLE REIGNS 717T

FF MS DUAL FOCUS A411

TNT DUAL FOCUS T249  
FF MS PARADIGM SM/AN S40

	CE	BW	WW	YW	MCE	MM	MW
EPDs:	13.5	-0.7	65.9	90.7	5.8	19.3	52.2
	CW	MARB	REA	API	TI		
	21.1	.25	.71	129	72		

Pasture exposed to FF NIGHTRIDE F1685. Due 4/4/21.



## FF MS ALL TIME G1424

ASA# 3661166 • BD: 2/13/19  
Adj. BW: 69 lbs. • Adj. 205: 543 lbs.

Black • Polled • 5/8 Simmental • Heifer

OVAL F ALL TIME A322

MCM TOP GRADE 018X  
OVAL F YIN Y26

FF MS FINAL PROD B1114

CONNEALY FINAL PRODUCT  
FF MS SULLIVAN Y048

	CE	BW	WW	YW	MCE	MM	MW
EPDs:	11.3	-0.2	72.4	111.7	8	28.2	64.4
	CW	MARB	REA	API	TI		
	38.8	.32	.54	133	77		

Pasture exposed to FF NIGHTRIDE F1685. Due 4/10/21.



## FF MS COWBOY CUT G1444

ASA# 3661156 • BD: 2/12/19  
Adj. BW: 81 lbs. • Adj. 205: 612 lbs.

Black • Polled • Purebred • Heifer

CCR COWBOY CUT 5048Z

TRIPLE C SINGLETARY S3H  
CCR MS 4045 TIME 7322T

FF MS EVEREADY B844

TNT EVER READY R232  
FF MS MAJIC MAN U324

	CE	BW	WW	YW	MCE	MM	MW
EPDs:	11.1	2.2	83.6	119.8	5.6	24.1	65.8
	CW	MARB	REA	API	TI		
	31.9	.20	1.10	140	83		

Pasture exposed to FF NIGHTRIDE F1685. Due 4/12/21.



## FF MS STEP UP G1450

ASA# 3661373 • BD: 4/8/19  
Adj. BW: 75 lbs. • Adj. 205: 548 lbs.

Homo Black • Polled • Purebred • Heifer

FELT PURPLE STEPS UP

WS A STEP UP X27  
FELT PURPLE REIGNS 717T

FF MS DREAM ON B1050

CNS DREAM ON L186  
LHT MS MACHO 28X

	CE	BW	WW	YW	MCE	MM	MW
EPDs:	13.1	0.9	73.5	112.9	5.6	17.8	54.5
	CW	MARB	REA	API	TI		
	24.3	.12	.93	130	76		

Pasture exposed to FF NIGHTRIDE F1685. Due 5/3/21.



## FF MS ABSOLUTE G1516

ASA# 3661188 • BD: 2/16/19  
Adj. BW: 72 lbs. • Adj. 205: 624 lbs.

Black • Polled • 1/2 Simmental • Heifer

K C F BENNETT ABSOLUTE

S A V FINAL ANSWER 0035  
THOMAS MISS LUCY 5152

FF MS TURN POINT C816

LRS TURNING POINT 3117A  
FF DURA U036

	CE	BW	WW	YW	MCE	MM	MW
EPDs:	13.3	-0.7	79.8	127	6.4	22.1	62
	CW	MARB	REA	API	TI		
	44.7	.44	.78	142	85		

AI bred 5/30/20 to CCR BOULDER 1339A. Due 3/9/21.

# NOTES

# BRED HEIFERS



## FF MS STEP UP G1524

ASA# 3661235 • BD: 3/2/19  
Adj. BW: 68 lbs. • Adj. 205: 440 lbs.  
Black • Polled • 3/4 Simmental • Heifer

FELT PURPLE STEPS UP

WS A STEP UP X27  
FELT PURPLE REIGNS 717T

FF MS PARAMOUNT C1314

GW PARAMOUNT 718Y  
FF MS SHOOTER A1014

EPDs:	CE	BW	WW	YW	MCE	MM	MW
	13.5	-1	61.1	90.1	5.7	20	50.5
	CW	MARB	REA	API	TI		
	14	.26	.67	128	70		

Pasture exposed to FF NIGHTRIDE F1685. Due 4/4/21.



## FF AX COWBOY G1584

ASA# 3661435 • BD: 5/29/19  
Adj. BW: lbs. • Adj. 205: 792 lbs.  
Black • Polled • 3/4 Simmental • Heifer

APEX COWBOY CUT SW172B

CCR COWBOY CUT 5048Z  
AP RACHEL S172W

FF MS TURN POINT C784

LRS TURNING POINT 3117A  
FF MS FIG THIS T504

EPDs:	CE	BW	WW	YW	MCE	MM	MW
	11	1.4	76.2	116.4	7.9	32.4	70.5
	CW	MARB	REA	API	TI		
	32.7	.35	.77	131	79		

Pasture exposed to FF NIGHTRIDE F1685. Due 4/4/21.



## FF MS PAY DAY 815 G1612

ASA# 3661385 • BD: 4/16/19  
Adj. BW: 74 lbs. • Adj. 205: lbs.  
Homo Black • Polled • 5/8 Simmental • Heifer

FF PAY DAY C815

FF PAY DAY Y110  
FF MS HOF U086

FF MS PROTEGE D912

TSN PROTEGE Z896  
FF MS HALL OF FAME W080

EPDs:	CE	BW	WW	YW	MCE	MM	MW
	9.8	1.4	76.4	113.2	5.2	20.4	58.6
	CW	MARB	REA	API	TI		
	31	.22	.70	128	74		

Pasture exposed to FF NIGHTRIDE F1685. Due 4/4/21.



## FF MS GRAD 714 G1618

ASA# 3661320 • BD: 3/23/19  
Adj. BW: 64 lbs. • Adj. 205: 634 lbs.  
Homo Black • Polled • 5/8 Simmental • Heifer

FF GRADUATE D714

S D S GRADUATE 006X  
FF MS INTEGRITY T074

FF MS UNITED D1018

W/C UNITED 956Y  
FF MS PAYOFF XO48

EPDs:	CE	BW	WW	YW	MCE	MM	MW
	13.2	-0.8	72.8	107.5	7.4	27.8	64.1
	CW	MARB	REA	API	TI		
	26.4	.17	.64	126	75		

Pasture exposed to FF NIGHTRIDE F1685. Due 4/4/21.



## FF MS GOT GAME G1621

ASA# 3661328 • BD: 3/26/19  
Adj. BW: 78 lbs. • Adj. 205: 615 lbs.  
Black • Polled • 3/4 Simmental • Heifer

FELT GOT GAME

R&R CHAMBERLAIN X744  
SVF SHEZA GLORY T912

FF MS STYLE D163

FELT SILVEIRASSTYLE 234Y  
FF MS MACHO R053

EPDs:	CE	BW	WW	YW	MCE	MM	MW
	9.4	1.9	70.8	107.3	5.1	24.3	59.7
	CW	MARB	REA	API	TI		
	28.7	.14	.60	111	69		

AI bred 6/7/20 to K C F BENNETT ABSOLUTE. Due 3/17/21.



## FF MS STEP UP G1643

ASA# 3662745 • BD: 4/17/19  
Adj. BW: 78 lbs. • Adj. 205: 595 lbs.  
Black • Polled • Purebred • Heifer

FELT PURPLE STEPS UP

WS A STEP UP X27  
FELT PURPLE REIGNS 717T

FF COWBOY CUT D843

CCR COWBOY CUT 5048Z  
FF MS FUSION U283

EPDs:	CE	BW	WW	YW	MCE	MM	MW
	11.4	2.3	79.7	119	4.9	20.4	60.2
	CW	MARB	REA	API	TI		
	31.1	.22	.95	135	80		

Pasture exposed to FF NIGHTRIDE F1685. Due 4/1/21.



## FF MS GOT GAME G1675

ASA# 3661249 • BD: 3/6/19  
Adj. BW: 71 lbs. • Adj. 205: 485 lbs.  
Black • Polled • Purebred • Heifer

FELT GOT GAME

R&R CHAMBERLAIN X744  
SVF SHEZA GLORY T912

FF MS MASTER D535

CCR 2108 GRADUATE 0043B  
FF MS RED LABEL S575

EPDs:	CE	BW	WW	YW	MCE	MM	MW
	11.3	1.2	72.1	109.3	4.4	21.8	57.8
	CW	MARB	REA	API	TI		
	32.6	.10	.80	124	74		

AI bred 5/11/20 to W/C UNITED 956Y. Due 2/18/21.



## FF MS JIFF G1686

ASA# 3661445 • BD: 3/10/19  
Adj. BW: lbs. • Adj. 205: 526 lbs.  
Black • Polled • 1/2 Simmental • Heifer

KEY - JIF 740E

BROOKING PROSECUTOR 222  
A&K EILEENMERE Z862

FF MS TURNING PTXLB D876

LRS TURNING POINT 3117A  
ZKCC COW 550X

EPDs:	CE	BW	WW	YW	MCE	MM	MW
	6.1	2.7	81.9	135.9	0.6	24.1	65
	CW	MARB	REA	API	TI		
	50.9	.46	.61	115	80		

AI bred 5/12/20 to HOOK'S BEACON 56B. Due 2/19/21.

# YEARLING BULLS



## FF MS THE ROCK G1687

ASA# 3661182 • BD: 2/15/19  
Adj. BW: 70 lbs. • Adj. 205: 641 lbs.

Homo Black • Polled • 5/8 Simmental • Heifer

GIBBS 4091B THE ROCK

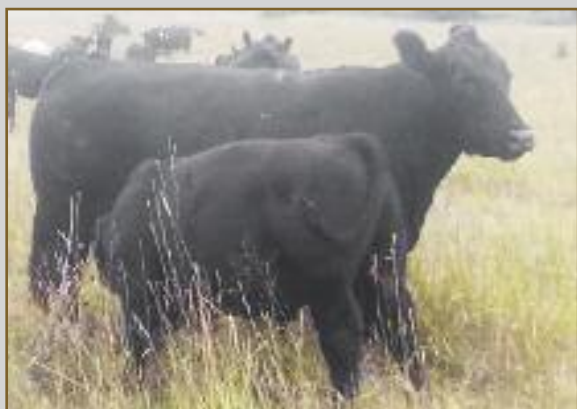
J BAR J NIGHTRIDE 225Z  
GIBBS 2524Z FANCY R820

FF MS TOUR OF DUTY D776

R B TOUR OF DUTY 177  
FF MS ABOVE PAR T576

EPDs:	CE	BW	WW	YW	MCE	MM	MW
	13	0.1	79.3	130.2	7.4	22.7	62.3
	CW	MARB	REA	API	TI		
	48.9	.23	.87	133	80		

AI bred 6/6/20 to CCR PAY DIRT 2340C. Due 3/16/21.



ASA# • BD:  
Adj. BW: lbs. • Adj. 205: lbs.  
Black • • Commercial AN •

EPDs:	CE	BW	WW	YW	MCE	MM	MW
	CW	MARB	REA	API	TI		

Pasture exposed to FF NIGHTRIDE F1685. Due 4/10/21.



## FF NIGHT RIDE G1712

ASA# 3661217 • BD: 2/26/19  
Adj. BW: 76 lbs. • Adj. 205: 594 lbs.

Homo Black • Polled • 5/8 Simmental • Heifer

J BAR J NIGHTRIDE 225Z

GW PREMIUM BEEF 021TS  
J BAR J MISS ND 793X

FF MS COWBOY CUT E1212

CCR COWBOY CUT 5048Z  
FF MS FINAL PRODUCT Z712

EPDs:	CE	BW	WW	YW	MCE	MM	MW
	12.4	0.2	80.5	127.8	6.3	18.5	58.7
	CW	MARB	REA	API	TI		
	39.4	.57	.80	149	88		

Pasture exposed to FF NIGHTRIDE F1685. Due 4/23/21.



## FF NIGHT RIDE G1740

ASA# 3661215 • BD: 2/26/19  
Adj. BW: 72 lbs. • Adj. 205: 566 lbs.

Homo Black • Polled • 1/2 Simmental • Heifer

J BAR J NIGHTRIDE 225Z

GW PREMIUM BEEF 021TS  
J BAR J MISS ND 793X

FF MS TOUR OF DUTY E1340

R B TOUR OF DUTY 177  
FF MS DUAL FOCUS A340

EPDs:	CE	BW	WW	YW	MCE	MM	MW
	14.2	-1.2	74.9	121.9	6.8	17.5	54.9
	CW	MARB	REA	API	TI		
	43.8	.62	.60	143	85		

AI bred 5/30/20 to HOOK'S BEACON 56B. Due 3/9/21.



## FF MS JIFF G1750

ASA# 3661177 • BD: 2/15/19  
Adj. BW: 75 lbs. • Adj. 205: 644 lbs.

Black • Polled • 1/8 Simmental • Heifer

KEY - JIF 740E

BROOKING PROSECUTOR 222  
A&K EILENMERE Z862

FF MS HOOVER DAM E1050

HOOVER DAM  
LHT MS MACHO 28X

EPDs:	CE	BW	WW	YW	MCE	MM	MW
	9.5	1.2	84.8	142	2.2	27.1	69.4
	CW	MARB	REA	API	TI		
	58	.62	.48	136	88		

Pasture exposed to FF NIGHTRIDE F1685. Due 4/8/21.



## ASA Suggested Sale Terms and Conditions

Effective January 1, 2011

**BIDDING AND APPLICABLE LAW:** All cattle listed in this offering comply with prevailing sale terms and conditions as set forth by the laws of the state wherein the sale is conducted. There are no warranties, expressed or implied, by either the auctioneer or consignor, except as set forth herein, as to the merchantability of fitness for any particular purpose of any animal offered in this sale. The right to bid or the right to reject the final bid, if done before the hammer falls, is reserved for all sellers unless otherwise announced from the sale block or as prohibited by law in the state wherein the sale is being conducted.

**ANNOUNCEMENTS:** Any change of information other than in the catalog will be announced from the auction block and such announcements shall take precedence over printed material. All statements made from the auction block or those made by the seller (in private treaty), must be documented by seller if requested by the buyer at time of sale.

**TERMS:** Terms of sale are cash unless satisfactory credit arrangements have been made with the seller previous to the sale of any animal so affected.

**PURCHASER'S RISK:** Each animal becomes the property of and therefore is also the risk of the purchaser as soon as it is sold; except it shall be the obligation of the seller to see that animals are fed and cared for free of charge to purchaser, until loaded for shipment or until the expiration of twenty-four (24) hours after the sale, whichever occurs first.

### **HEALTH REQUIREMENTS:**

1. All cattle entered for sale must meet the health regulations of the state in which they are sold. All other agreements regarding the health of the animal will be between the buyer and seller and should be documented in writing.
2. If sale cattle are returned to the seller for an adjustment, they must meet the health requirements of the state they are returned to.

**CERTIFICATE OF REGISTRY:** Each animal, which is catalogued, offered and sold as a registered animal, shall have a certificate of registry available at time of sale. When an animal is sold as "eligible for registry" or "registry applied for", the seller shall be responsible for obtaining the certificate of registry and for the proper transfer of the certificate to the purchaser including full payment of transfer fees.

**IDENTIFICATION:** Each animal, at time of sale, must have a readable tattoo or brand corresponding to that shown on the certificate of registration.

January 1, 2011

## Quick Reference to ASA EPDs and \$ Indexes

**Expected Progeny Differences (EPDs):** EPDs are the most accurate and effective tool available for comparing genetic levels. In using EPDs, the difference between two sires' EPDs represents the unit difference expected in the performance of their progeny. For example, if sires A and B have EPDs of +10 and -5, a 15-unit difference would be expected in their progeny (moving from -5 to +10 yields 15 units). Key to using EPDs is knowing what units they are expressed in. For example, if the above case referred to weaning weight EPDs, A would be expected to sire 15-pounds more *weaning weight* than B. If calving ease were the trait, A would be expected to sire 15-percent more *unassisted births* in first-calf heifers; in other words, if B sired 30 assists in a group of 100 heifers, we'd expect A to require 15 assists. A percentile-ranking chart is required to determine where a bull's EPDs rank him relative to other bulls in the breed. For percentile rankings or more detailed information about EPDs and \$ indexes visit [www.simmental.org](http://www.simmental.org). Listed below are the units ASA EPDs are expressed in:

**All-Purpose Index (API):** Dollars per cow exposed under an all-purpose-sire scenario. (See below for more details.)

**Average Daily Gain (ADG):** Pounds of post-weaning daily weight gain.

**Back Fat (BF):** Inches of backfat.

**Birth Weight (BW):** Pounds of birth weight.

**Calving Ease (CE):** Percent of unassisted births when used on heifers.

**Carcass Weight (CW):** Pounds of carcass weight.

**Docility (DOC):** Percent of offspring achieving a docile (1) score.

**Maternal Calving Ease (MCE):** Percent of unassisted births in first-calving daughters.

**Milk (MLK):** Pounds of weaning weight due to milk.

**Marbling (MRB):** Marbling score.

**Maternal Weaning Weight (MWW):** Pounds of weaning weight due to milk and growth.

**Ribeye Area (REA):** Square inches of ribeye.

**Warner-Bratzler Shear Force (WBSF):**

Pounds of force required to shear a steak.

**Stayability (STAY):** Percent of daughters remaining in the cowherd at 6 years of age.

**Terminal Index (TI):** Dollars per cow exposed under a terminal-sire scenario. (See below for more details.)

**Weaning Weight (WW):** Pounds of weaning weight.

**Yearling Weight (YW):** Pounds of yearling weight.

**Yield Grade (YG):** Yield grade score.

**\$ Indexes:** Though EPDs allow for the comparison of genetic levels for many economically important traits, they only provide a piece of the economic puzzle. That's where \$ indexes come in. Through well-conceived, rigorous mathematical computation, \$ indexes blend EPDs and economics to estimate an animal's overall impact on your bottom line. The same technology that led to the dramatic progress in swine, poultry and dairy genetics over the last several decades was used to develop the following \$ indexes:

**All-Purpose Index (API):** Evaluates sires for use on the entire cow herd (bred to both Angus first-calf heifers and mature cows) with the portion of their daughters required to maintain herd size retained and the remaining heifers and steers put on feed and sold grade and yield.

**Terminal Index (TI):** Evaluates sire for use on mature Angus cows with all offspring put on feed and sold grade and yield.

**Using API and TI:** First, determine which index to use; if you're keeping replacements use API, if not, TI. Then, just as with EPDs, zero in on the unit difference between bulls. (As described above, index units are in dollars per cow exposed.) The difference can be used to determine how much a bull is worth compared to another. Or, put another way, how much you can pay for one bull compared to another. For example, when buying an all-purpose-type sire, you can quickly figure a bull scoring +100 for API is worth an extra \$6,000 over a +50 bull if both are exposed to 30 cows over 4 years ( $\$50 \text{ diff.} \times 30 \text{ hd.} \times 4 \text{ yr.} = \$6,000$ ). A percentile-ranking chart is required to determine where a bull's index value ranks him relative to other bulls in the population. For percentile rankings or more detailed information about EPDs and \$ indexes visit [www.simmental.org](http://www.simmental.org).

**Important disclaimer:** DO NOT compare index values of purebreds of different breeds, hybrids of different breed composition or purebreds with hybrids — our system was not developed to make valid comparison among these groups. Therefore, you must first determine the breed and breed composition appropriate for your herd and use index values to compare animals within that population.

# FORSTER FARMS

74096 Road 434 • Smithfield, NE 68976-1039

PRESORTED  
FIRST-CLASS MAIL  
U.S. POSTAGE PAID  
LivestockDirect.net  
PERMIT NO. 29

## WWW.FORSTERFARMS.COM

### Forster Farms "Simmental Production Sale"

Saturday, January 30, 2021 - 1:00 p.m.  
at the farm - Smithfield, Nebraska



H1689



H1429



H1686



H1884



H1820



H1677